



SITE PHOTOS



1- SITE LOOKING NORTH



2- SITE LOOKING NORTH



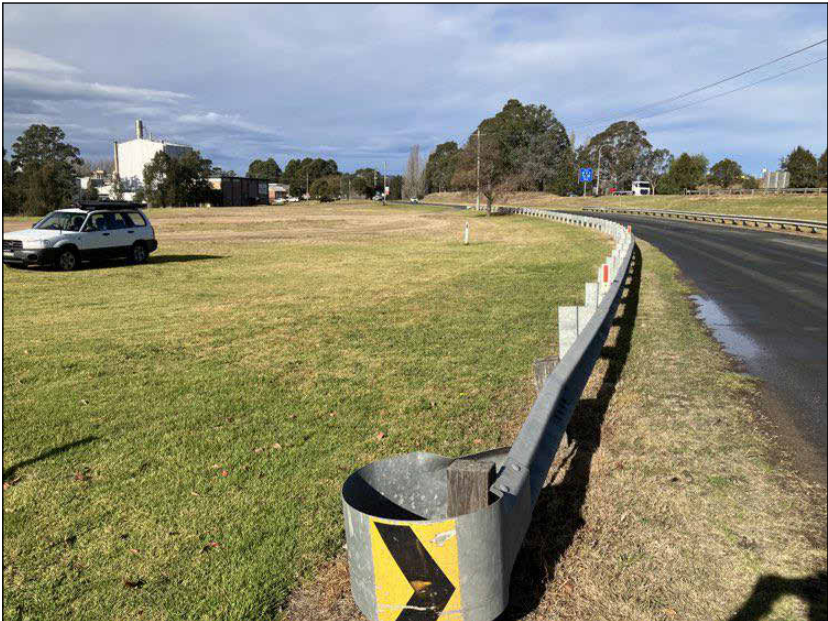
3- SITE LOOKING SOUTH TO TRAINING CENTRE FROM NORTHERN END ENTRY



4- SITE LOOKING SOUTH TO TRAINING CENTRE



5- TRAINING CENTRE



6- SITE LOOKING SOUTH TO TRAINING CENTRE ALONG ANDERSON ST



7- SITE FROM NORTHERN END LOOKING EAST ALONG BRIDGE ST



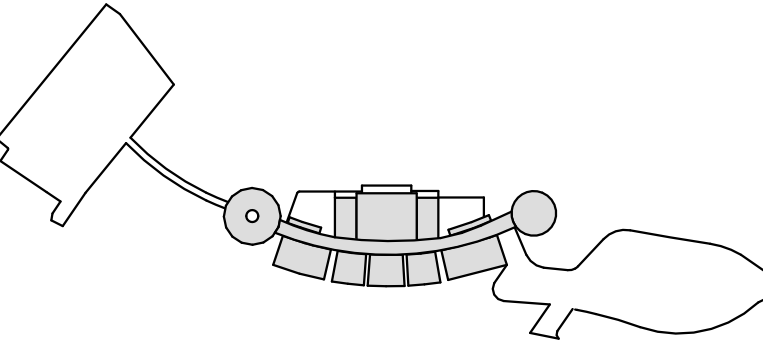
8- SITE LOOKING EAST FROM CULVERT

© COPYRIGHT COX ARCHITECTURE PTY LTD ACN 002 535 891

ANY FORM OF REPRODUCTION OF THIS DRAWING IN FULL OR IN PART WITHOUT THE WRITTEN PERMISSION OF COX ARCHITECTURE PTY LTD CONSTITUTES AN INFRINGEMENT OF COPYRIGHT

Rev	Description	By	Date
1	Issued For DA Submission	LV	09/04/2024
2	DA Draft for Information	SM	20/09/2024
3	Issued For DA Submission	SM	27/09/2024

Structural Engineer Level 5, 151 Clarence Street, Sydney NSW 2000	ARUP
MEP Engineers Level 5, 151 Clarence Street, Sydney NSW 2000	ARUP
Acoustic Engineer Level 5, 151 Clarence Street, Sydney NSW 2000	ARUP
Civil Engineer Level 5, 151 Clarence Street, Sydney NSW 2000	ARUP
Sustainability and ESD Engineer Level 5, 151 Clarence Street, Sydney NSW 2000	ARUP
Quantity Surveyor Level 28, 45 Clarence Street, Sydney NSW 2000 T +61 2 9599 7422	WT Partnership
Traffic Engineer Shop 7, 720 Old Princess Highway, Sutherland NSW 2232 T +61 2 9521 7199	McLaren Traffic Engineering
Stormwater Engineer Bega NSW 2550 M +61 9409 909 388	JSA Engineering Solutions
BCA/ DDA Consultant	ATLR
Landscape Architect Suite 3, 1775 Myrtle St, Chippendale, NSW T +61 2 8244 8900	Context
Ecologist 7 High Crescent Tura Beach, NSW, 2550 M +61 448 235 577	Local Environmental Solutions
Geotechnical Engineer Unit 2/157 Newcastle St, Fyshwick, ACT, 2609 T +61 2 6285 1547	ACT Geotechnical
Facade Engineer Level 5, 151 Clarence Street, Sydney NSW 2000	ARUP
AV Design	



KEY PLAN

Cox Architecture
70 George Street
The Rocks NSW 2000
Australia
T + 61 2 9267 9599
coxarchitecture.com.au

Nominated Architects:
Joe Agius No. 6491
Ramin Jahromi No. 10000

COX

Client
REGIONAL CIRCULARITY CO-OPERATIVE

Project No.
222111.01

Project
NATIONAL CIRCULARITY CENTRE BEGA
Level 1 / Suite 5/106 Auckland St, Bega, NSW, 2550

Acknowledgement

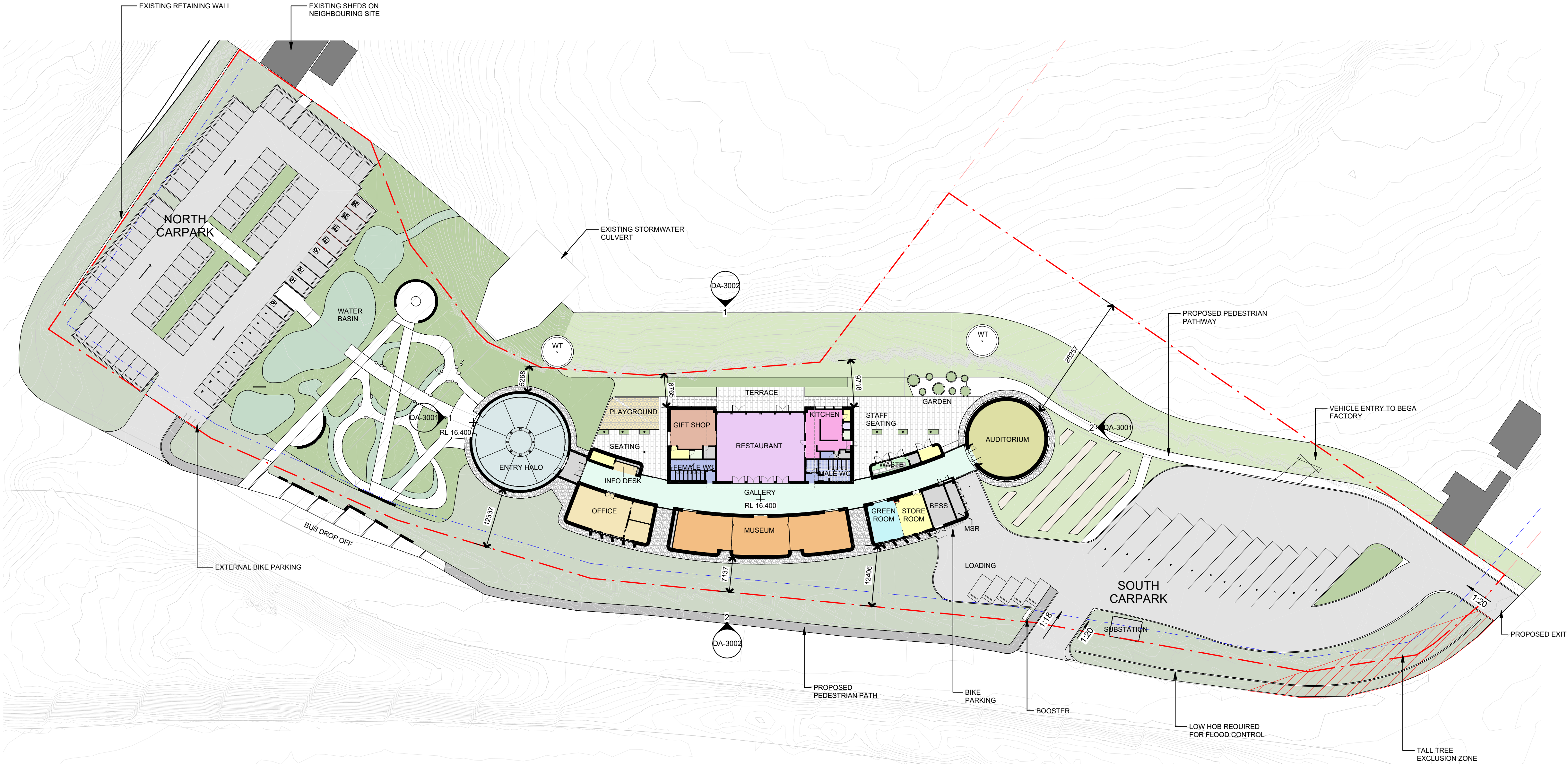
Drawing Title
SITE PLAN

Document Control Status:
DEVELOPMENT APPLICATION

Co-ordinated: LV	Drawn: SPG
Project Architect: LV	Scale: As indicated @ A1
Project Director: JF	Date: 27/09/2024
Drawing Number: DA-1102	Revision: 3

CAR PARK TYPE	NUMBER OF SPACES	LOCATION
GROUND FLOOR		
5400mm x 2600mm	66	NORTH CARPARK
5400mm x 2600mm	5	SOUTH CARPARK
5400mm x 2600mm / Seniors	6	NORTH CARPARK
5400mm x 2600mm Electric	3	NORTH CARPARK
5400x2600@90° Disabled with Wheelstop	4	NORTH CARPARK
7400mm x 2900mm / Parents With Prams	4	NORTH CARPARK
14500mm x 3000mm Caravan Bay	7	SOUTH CARPARK
14500mm x 4000mm Bus Bay	5	SOUTH CARPARK
	100	
Grand Totals: 100	100	

BIKE PARKING		
PARKING TYPE	NUMBER OF SPACES	LOCATION
<varies>	16	<varies>
Grand total	16	



2 MASTERPLAN - GROUND FLOOR
SCALE 1 : 500

MASTERPLAN USES

AMENITIES

AUDITORIUM

COOL ROOM

ENTRY HALO

FREEZER

GALLERY/ CIRCULATION

GIFT SHOP

GREEN ROOM / STORAGE

KITCHEN

MUSEUM

OFFICE

PLANT

RESTAURANT

STORE ROOM

WASTE

GA PLANS LEGEND:

 SITE BOUNDARY

 3m SETBACK

█

 EXISTING BUILDINGS

█

 NEW ON-GRADE CARPARK

█

 NEW PEDESTRIAN PATHS

█

 NEW PEDESTRIAN PATHS (COUNCIL)

█

 HALO WATER FEATURE

SK

 SKYLIGHT

WT

 WATER TANK

BOL

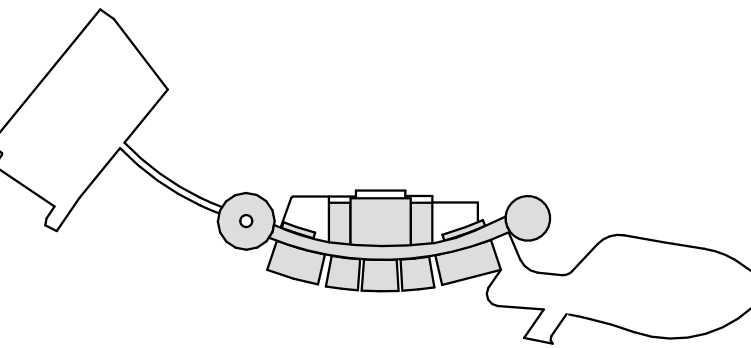
 BOLLARD

BK

 BICYCLE RACKS

FOR LANDSCAPE FINISHES REFER TO LANDSCAPE ARCHITECT'S DRAWINGS

© COPYRIGHT COX ARCHITECTURE PTY LTD ACN 002 535 891			
ANY FORM OF REPRODUCTION OF THIS DRAWING IN FULL OR IN PART WITHOUT THE WRITTEN PERMISSION OF COX ARCHITECTURE PTY LTD CONSTITUTES AN INFRINGEMENT OF COPYRIGHT			
Rev	Description	By	Date
1	Issued For DA Submission	LV	09/04/2024
2	DA Draft for Information	SM	20/09/2024
3	Issued For DA Submission	SM	27/09/2024
4	Issued For DA RFI (Council)	LV	18/02/2025
Structural Engineer		ARUP	
Level 5, 151 Clarence Street, Sydney NSW 2000			
MEP Engineers		ARUP	
Level 5, 151 Clarence Street, Sydney NSW 2000			
Acoustic Engineer		ARUP	
Level 5, 151 Clarence Street, Sydney NSW 2000			
Civil Engineer		ARUP	
Level 5, 151 Clarence Street, Sydney NSW 2000			
Sustainability and ESD Engineer		ARUP	
Level 5, 151 Clarence Street, Sydney NSW 2000			
Quantity Surveyor		WT Partnership	
Level 28, 45 Clarence Street, Sydney NSW 2000			
T +61 2 9509 7422			
Traffic Engineer		McLaren Traffic Engineering	
Shop 7, 720 Old Princess Highway, Sutherland NSW 2232			
T +61 2 9521 7199			
Stormwater Engineer		JSA Engineering Solutions	
Bega NSW 2550			
M +61 9409 909 388			
BCA/ DDA Consultant		ATLR	
8/14 Wornald Street Symonston ACT 2609			
Landscape Architect		Context	
Suite 3, 1775 Myrtle St, Chippendale, NSW			
T +61 2 8244 8900			
Ecologist		Local Environmental Solutions	
7 High Crescent Tura Beach, NSW, 2550			
M +61 448 235 977			
Geotechnical Engineer		ACT Geotechnical	
Unit 2/157 Newcastle St, Fyfeville, ACT, 2609			
T +61 2 6285 1547			
Facade Engineer		ARUP	
Level 5, 151 Clarence Street, Sydney NSW 2000			
AV Design		ARUP	
Level 5, 151 Clarence Street, Sydney NSW 2000			



KEY PLAN

Cox Architecture
70 George Street
The Rocks NSW 2000
Australia
T + 61 2 9267 9599
coxarchitecture.com.au

Nominated Architects:
Joe Agius No. 6491
Ramin Jahromi No. 10000



Client REGIONAL CIRCULARITY CO-OPERATIVE

Project No. 222111.01

Project NATIONAL CIRCULARITY CENTRE BEGA
Level 1 / Suite 5/106 Auckland St, Bega, NSW, 2550

Acknowledgement

Drawing Title MASTERPLAN - GROUND FLOOR PLAN

Document Control Status: DEVELOPMENT APPLICATION

Co-ordinated:	LV	Drawn:	LV
Project Architect:	LV	Scale:	As indicated @ A1
Project Director:	JF	Date:	18/02/2025
Drawing Number:	DA-2101	Revision:	4



KEYNOTE LEGEND	
CODE	DESCRIPTION
DAGS.	
DR-201	
DR-401	
EC-101	RAMMED EARTH
EC-201	METAL CLADDING
FW-102	
FW-108	
GL-101	CLEAR DOUBLE GLAZING
GL-102	FIXED CLEAR GLAZING WITH INTERNAL LOUVRES
LV-101	GLASS LOUVRES - EBSA SYSTEM
LV-201	CHARCOAL COLOUR ALUMINIUM LOUVRES
LV-202	OPERABLE HORIZONTAL ALUMINIUM LOUVRES
LV-203	CONDENSER ENCLOSURE LOUVRES
MW-101	MILD STEEL OUTRIGGER, PAINTED
RF-101	CORRUGATED METAL ROOF
RF-102	INTEGRATED PV ROOF
RF-202	FRITTED GLASS AWNING

© COPYRIGHT COX ARCHITECTURE PTY LTD ACN 002 535 891
ANY FORM OF REPRODUCTION OF THIS DRAWING IN FULL OR IN PART WITHOUT THE WRITTEN PERMISSION OF COX ARCHITECTURE PTY LTD CONSTITUTES AN INFRINGEMENT OF COPYRIGHT

Rev	Description	By	Date
1	Issue for DD Submission	SM	02/07/2024
2	Issued for Information	DL	30/09/2024

Structural Engineer ARUP
Level 5, 151 Clarence Street, Sydney NSW 2000

MEP Engineers ARUP
Level 5, 151 Clarence Street, Sydney NSW 2000

Acoustic Engineer ARUP
Level 5, 151 Clarence Street, Sydney NSW 2000

Civil Engineer ARUP
Level 5, 151 Clarence Street, Sydney NSW 2000

Sustainability and ESD Engineer ARUP
Level 5, 151 Clarence Street, Sydney NSW 2000

Quantity Surveyor WT Partnership
Level 28, 45 Clarence Street, Sydney NSW 2000
T +61 2 9292 7422

Traffic Engineer McLaren Traffic Engineering
Shop 7, 720 Old Princess Highway, Sutherland NSW 2232
T +61 2 9521 7199

Stormwater Engineer JSA Engineering Solutions
Bega NSW 2550
M +61 9409 909 388

BCA/ DDA Consultant ATLR
8/14 Wornald Street Symonston ACT 2609

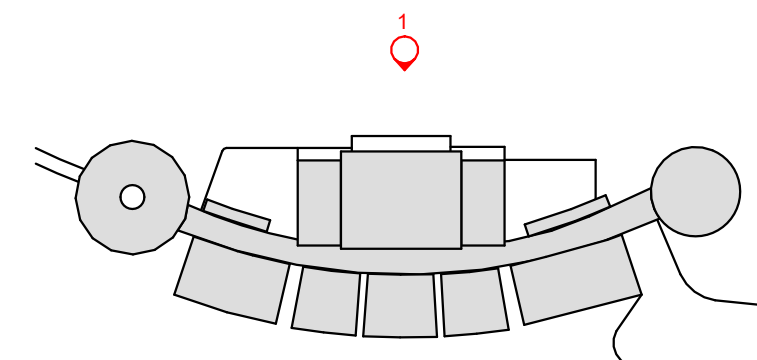
Landscape Architect Context
Suite 3, 1775 Myrtle St, Chippendale, NSW
T +61 2 8244 8900

Ecologist Local Environmental Solutions
7 High Crescent Tura Beach, NSW, 2550
M +61 448 235 977

Geotechnical Engineer ACT Geotechnical
Unit 2/157 Newcastle St, Fyshwick, ACT, 2609
T +61 2 6285 1547

Facade Engineer ARUP
Level 5, 151 Clarence Street, Sydney NSW 2000

AV Design ARUP
Level 5, 151 Clarence Street, Sydney NSW 2000



KEY PLAN

Cox Architecture
70 George Street
The Rocks NSW 2000
Australia
T + 61 2 9267 9599
coxarchitecture.com.au

Nominated Architects:
Joe Agius No. 6491
Ramin Jahromi No. 10000

COX

Client REGIONAL CIRCULARITY
CO-OPERATIVE

Project No. 222111.01

Project NATIONAL CIRCULARITY CENTRE
BEGA

Level 1 / Suite 5/106 Auckland St, Bega, NSW, 2550

Acknowledgement

Drawing Title ELEVATIONS - EAST & WEST

Document Control Status:

DESIGN DEVELOPMENT

DRAFT

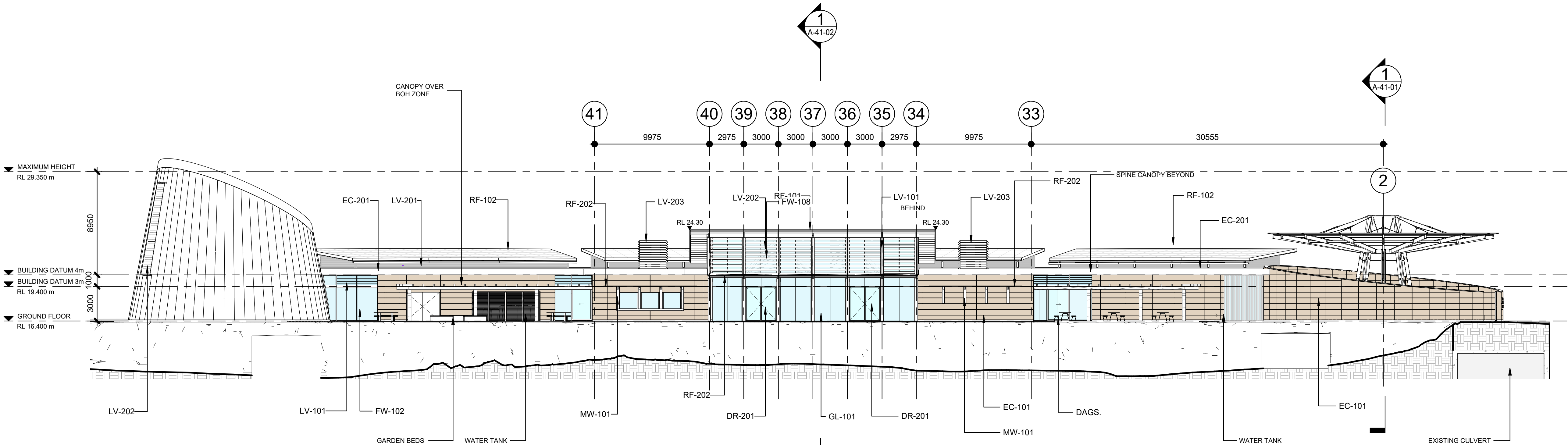
Co-ordinated: LV **Drawn:** LV

Project Architect: LV **Scale:** 1:200 @ A1

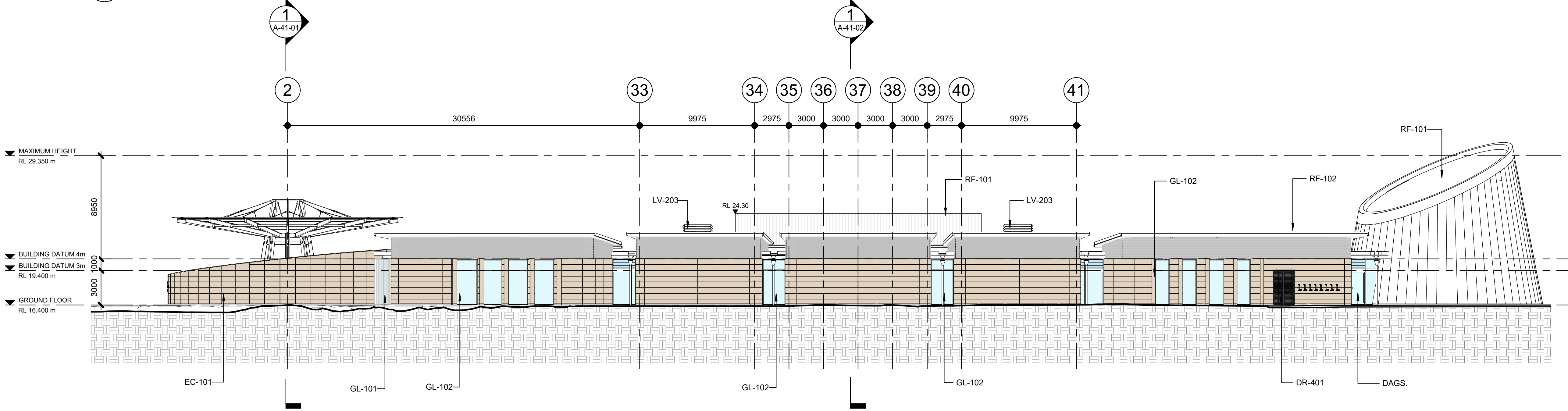
Project Director: JF **Date:** 30/09/2024

Drawing Number: A-31-01 **Revision:** 2

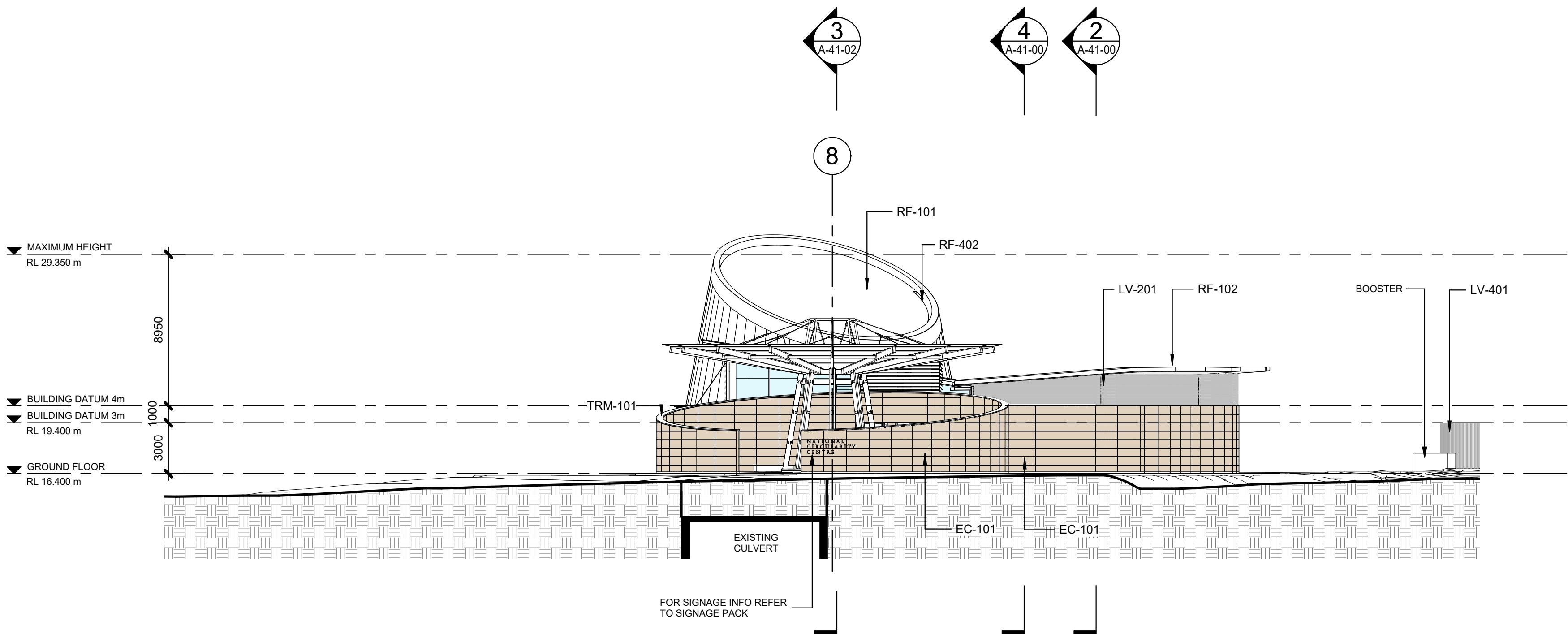
PLOT STAMP DATE: 30/09/2024 5:45:29 PM



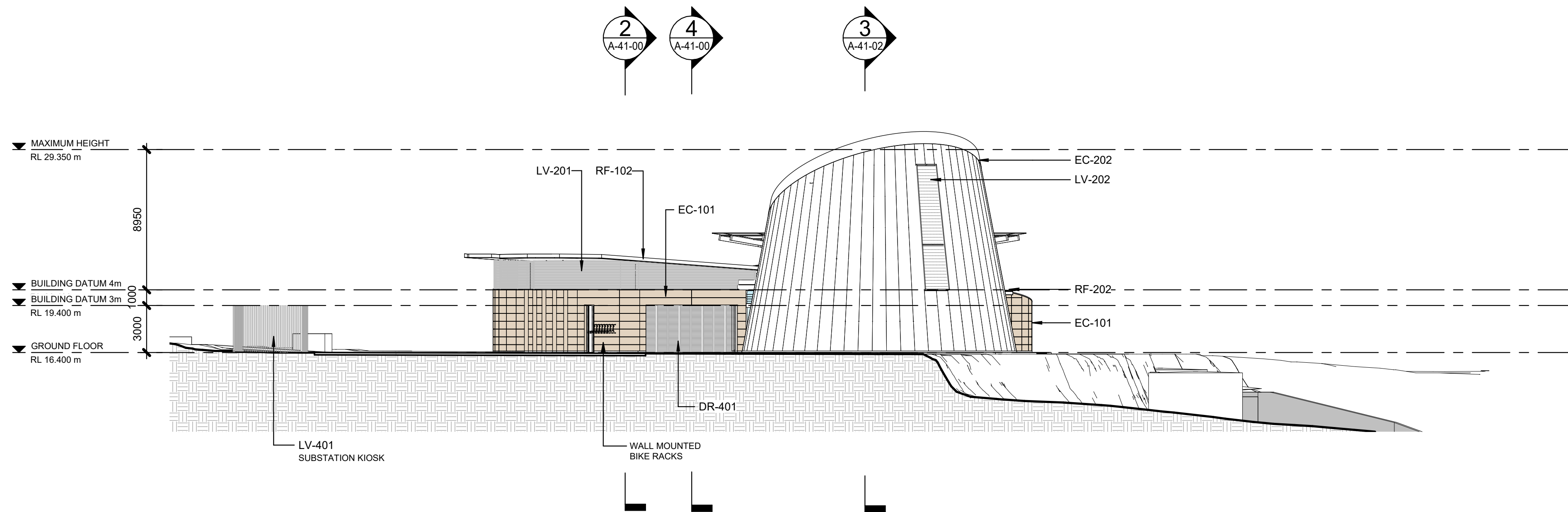
1 EAST ELEVATION
A-11-01 SCALE 1:200



2 WEST ELEVATION
A-11-01 SCALE 1:200



1 NORTH ELEVATION
A-11-01 SCALE 1 : 200



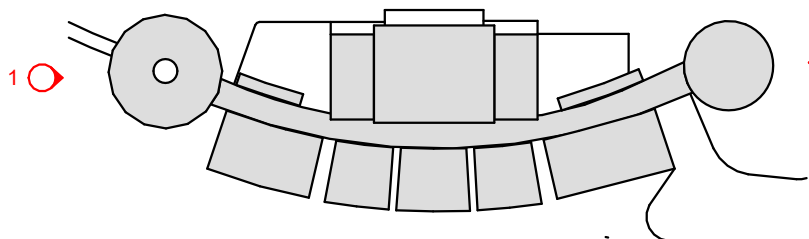
2 SOUTH ELEVATION
A-11-01 SCALE 1 : 200

KEYNOTE LEGEND	
CODE	DESCRIPTION
DR-401	
EC-101	RAMMED EARTH
EC-202	WEATHERING STEEL
LV-201	CHARCOAL COLOUR ALUMINIUM LOUVRES
LV-202	OPERABLE HORIZONTAL ALUMINIUM LOUVRES
LV-401	VERTICAL LOUVRED SCREEN TO SUBSTATION
RF-101	CORRUGATED METAL ROOF
RF-102	INTEGRATED PV ROOF
RF-202	FRITTED GLASS AWNING
RF-402	BOX GUTTER
TRM-101	ALUMINIUM TRIM

© COPYRIGHT COX ARCHITECTURE PTY LTD ACN 002 535 891

ANY FORM OF REPRODUCTION OF THIS DRAWING IN FULL OR IN PART WITHOUT THE WRITTEN PERMISSION OF COX ARCHITECTURE PTY LTD CONSTITUTES AN INFRINGEMENT OF COPYRIGHT

Rev	Description	By	Date
1	Issue for DD Submission	SM	02/07/2024
2	Issued for Information	DL	30/09/2024
Structural Engineer			ARUP
Level 5, 151 Clarence Street, Sydney NSW 2000			
MEP Engineers			ARUP
Level 5, 151 Clarence Street, Sydney NSW 2000			
Acoustic Engineer			ARUP
Level 5, 151 Clarence Street, Sydney NSW 2000			
Civil Engineer			ARUP
Level 5, 151 Clarence Street, Sydney NSW 2000			
Sustainability and ESD Engineer			ARUP
Level 5, 151 Clarence Street, Sydney NSW 2000			
Quantity Surveyor			WT Partnership
Level 20, 45 Clarence Street, Sydney NSW 2000			
T +61 2 9529 7422			
Traffic Engineer			McLaren Traffic Engineering
Shop 7, 720 Old Princess Highway, Sutherland NSW 2232			
T +61 2 9521 7199			
Stormwater Engineer			JSA Engineering Solutions
Bega NSW 2550			
M +61 0409 909 386			
BCA/ DDA Consultant			ATLR
8/14 Wornald Street Symonston ACT 2609			
Landscape Architect			Context
Suite 3, 1775 Myrtle St, Chippendale, NSW			
T +61 2 8244 8900			
Ecologist			Local Environmental Solutions
7 High Crescent Tura Beach, NSW, 2550			
M +61 448 235 977			
Geotechnical Engineer			ACT Geotechnical
Unit 2/157 Newcastle St, Fyshwick, ACT, 2609			
T +61 2 6285 1547			
Facade Engineer			ARUP
Level 5, 151 Clarence Street, Sydney NSW 2000			
AV Design			ARUP
Level 5, 151 Clarence Street, Sydney NSW 2000			



KEY PLAN

Cox Architecture
70 George Street
The Rocks NSW 2000
Australia
T + 61 2 9267 9599
coxarchitecture.com.au

Nominated Architects:
Joe Agius No. 6491
Ramin Jahromi No. 10000

COX

Client REGIONAL CIRCULARITY CO-OPERATIVE

Project No. 222111.01

Project NATIONAL CIRCULARITY CENTRE BEGA
Level 1 / Suite 5/106 Auckland St, Bega, NSW, 2550

Acknowledgement

Drawing Title ELEVATIONS - NORTH & SOUTH

Document Control Status:

DESIGN DEVELOPMENT

DRAFT

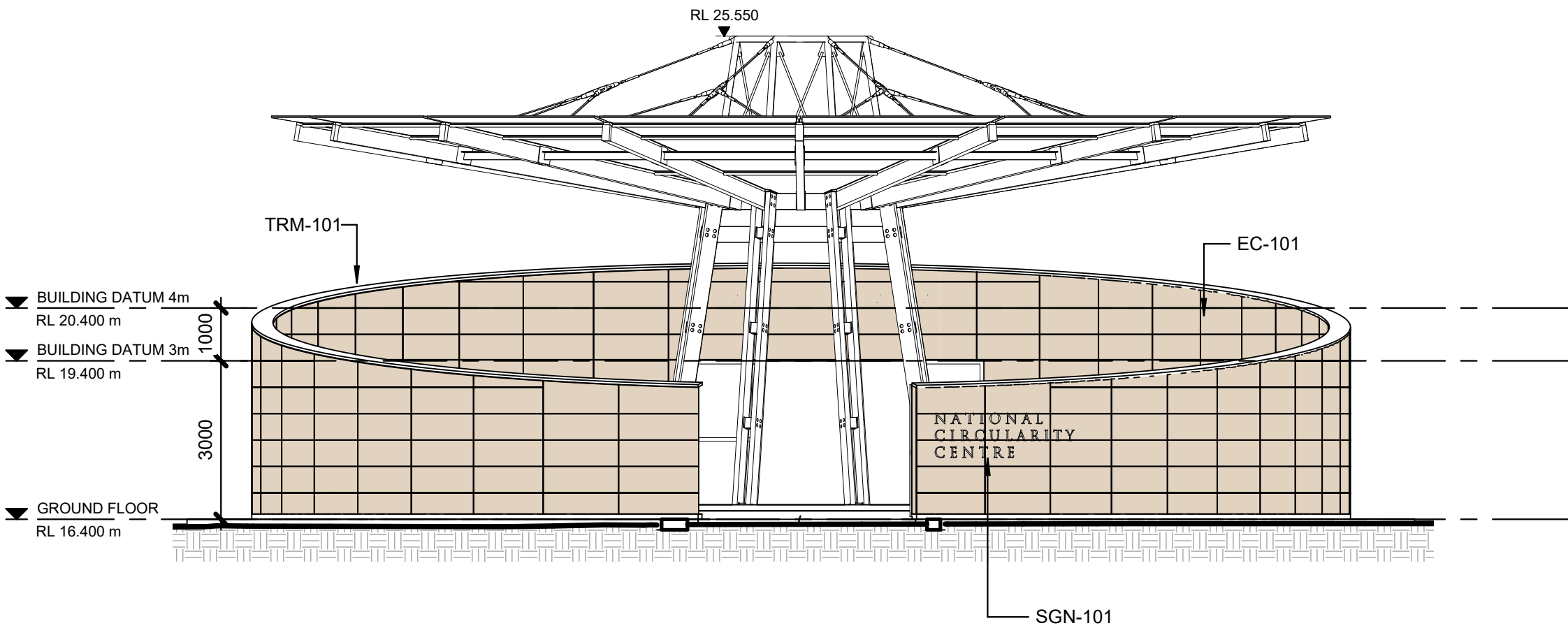
Co-ordinated: LV Drawn: LV

Project Architect: LV Scale: 1 : 200 @ A1

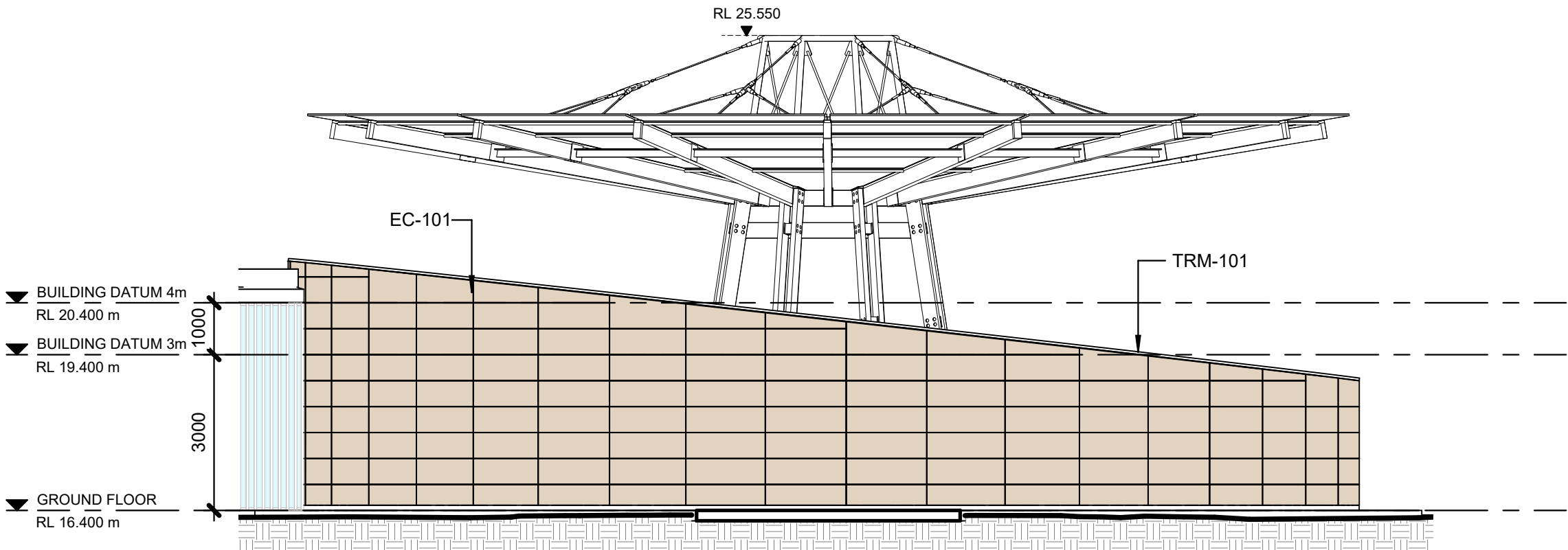
Project Director: JF Date: 30/09/2024

Drawing Number: A-31-00 Revision: 2

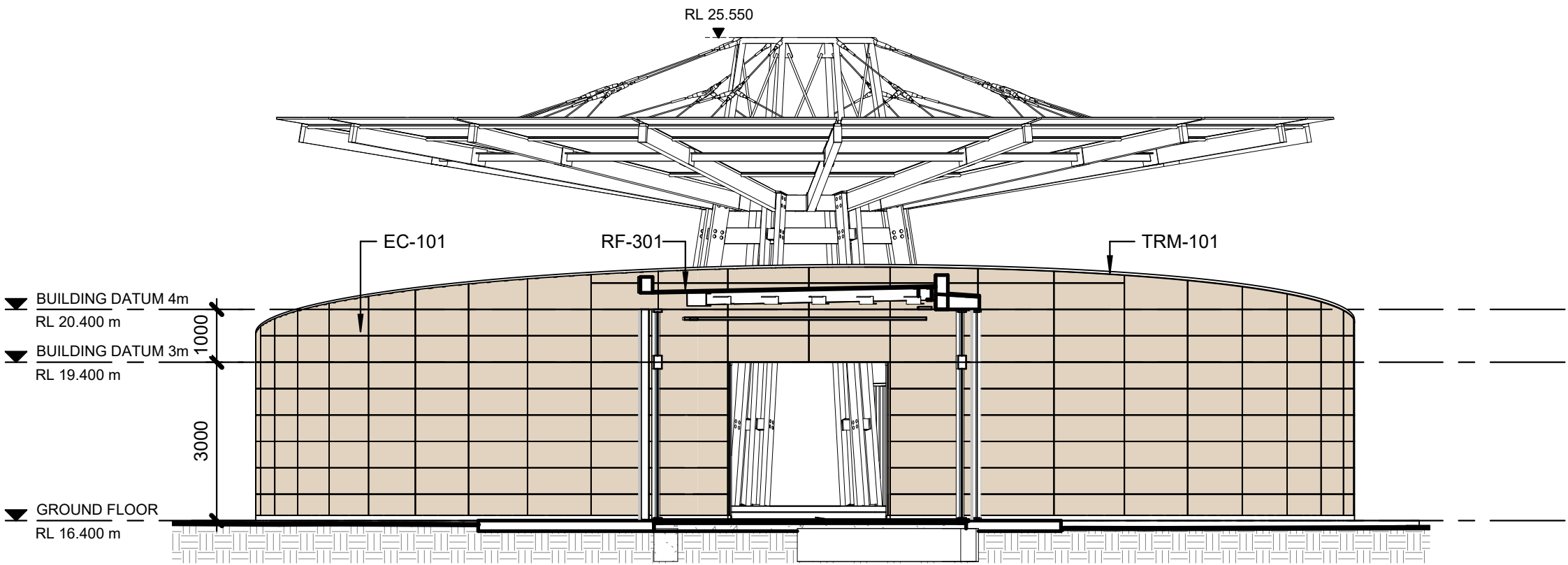
KEYNOTE LEGEND	
CODE	DESCRIPTION
EC-101	RAMMED EARTH
RF-301	MEMBRANE ROOF WITH BALLAST
SGN-101	
TRM-101	ALUMINIUM TRIM



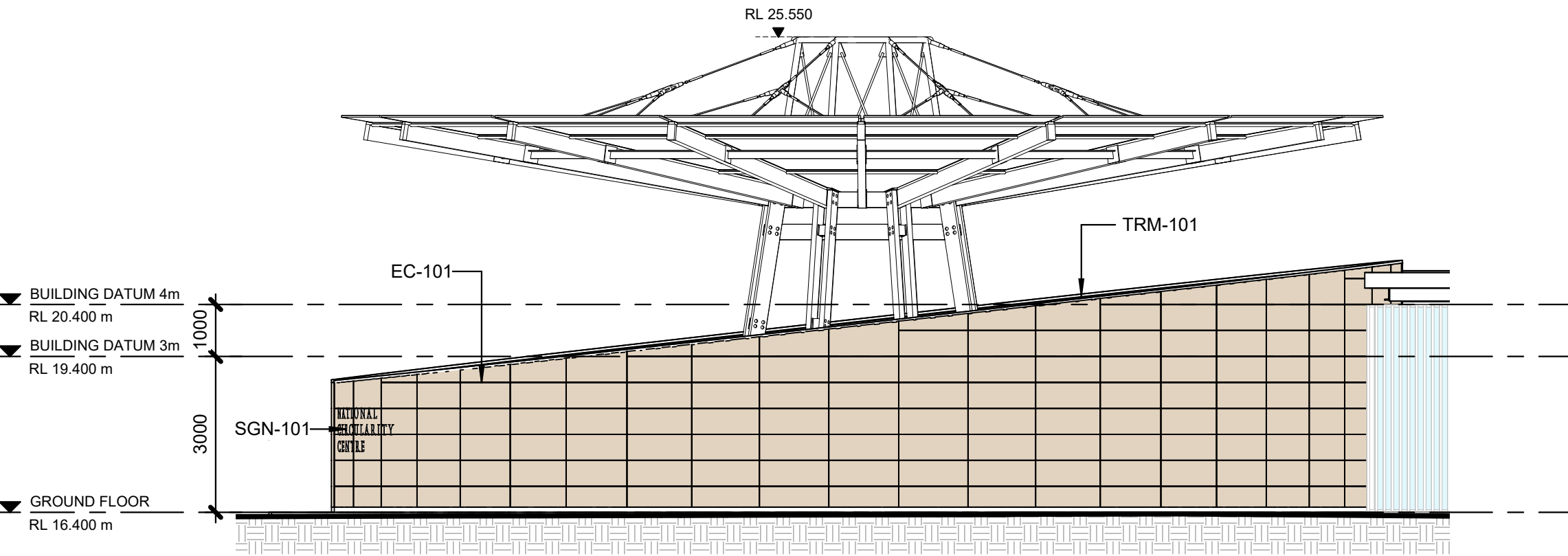
1 HALO BUILDING - ELEVATION - NORTH
SCALE 1 : 100



2 HALO BUILDING - FACADE ELEVATION - EAST
SCALE 1 : 100

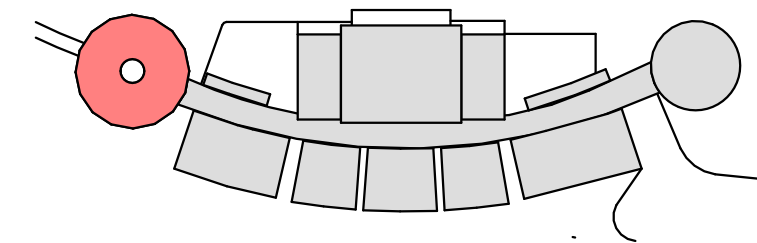


3 HALO BUILDING - FACADE ELEVATION - SOUTH
SCALE 1 : 100



4 HALO BUILDING - FACADE ELEVATION - WEST
SCALE 1 : 100

© COPYRIGHT COX ARCHITECTURE PTY LTD ACN 002 535 891			
ANY FORM OF REPRODUCTION OF THIS DRAWING IN FULL OR IN PART WITHOUT THE WRITTEN PERMISSION OF COX ARCHITECTURE PTY LTD CONSTITUTES AN INFRINGEMENT OF COPYRIGHT			
Rev	Description	By	Date
1	Issue for DD Submission	SM	02/07/2024
2	Issued for Information	DL	30/09/2024
Structural Engineer		ARUP	
Level 5, 151 Clarence Street, Sydney NSW 2000			
MEP Engineers		ARUP	
Level 5, 151 Clarence Street, Sydney NSW 2000			
Acoustic Engineer		ARUP	
Level 5, 151 Clarence Street, Sydney NSW 2000			
Civil Engineer		ARUP	
Level 5, 151 Clarence Street, Sydney NSW 2000			
Sustainability and ESD Engineer		ARUP	
Level 5, 151 Clarence Street, Sydney NSW 2000			
Quantity Surveyor		WT Partnership	
Level 20, 45 Clarence Street, Sydney NSW 2000			
T +61 2 9529 7422			
Traffic Engineer		McLaren Traffic Engineering	
Shop 7, 720 Old Princess Highway, Sutherland NSW 2232			
T +61 2 9521 7199			
Stormwater Engineer		JSA Engineering Solutions	
Bega NSW 2550			
M +61 9409 909 388			
BCA/ DDA Consultant		ATLR	
8/14 Wornald Street Symonston ACT 2609			
Landscape Architect		Context	
Suite 3, 1775 Myrtle St, Chippendale, NSW			
T +61 2 8244 8900			
Ecologist		Local Environmental Solutions	
7 High Crescent Tura Beach, NSW, 2550			
M +61 448 235 577			
Geotechnical Engineer		ACT Geotechnical	
Unit 2/157 Newcastle St, Fyshwick, ACT, 2609			
T +61 2 6285 1547			
Facade Engineer		ARUP	
Level 5, 151 Clarence Street, Sydney NSW 2000			
AV Design		ARUP	
Level 5, 151 Clarence Street, Sydney NSW 2000			



KEY PLAN

Cox Architecture
70 George Street
The Rocks NSW 2000
Australia
T + 61 2 9267 9599
coxarchitecture.com.au

Nominated Architects:
Joe Agius No. 6491
Ramin Jahromi No. 10000

COX

Client REGIONAL CIRCULARITY CO-OPERATIVE

Project No. 222111.01

Project NATIONAL CIRCULARITY CENTRE BEGA

Level 1 / Suite 5/106 Auckland St, Bega, NSW, 2550

Acknowledgement

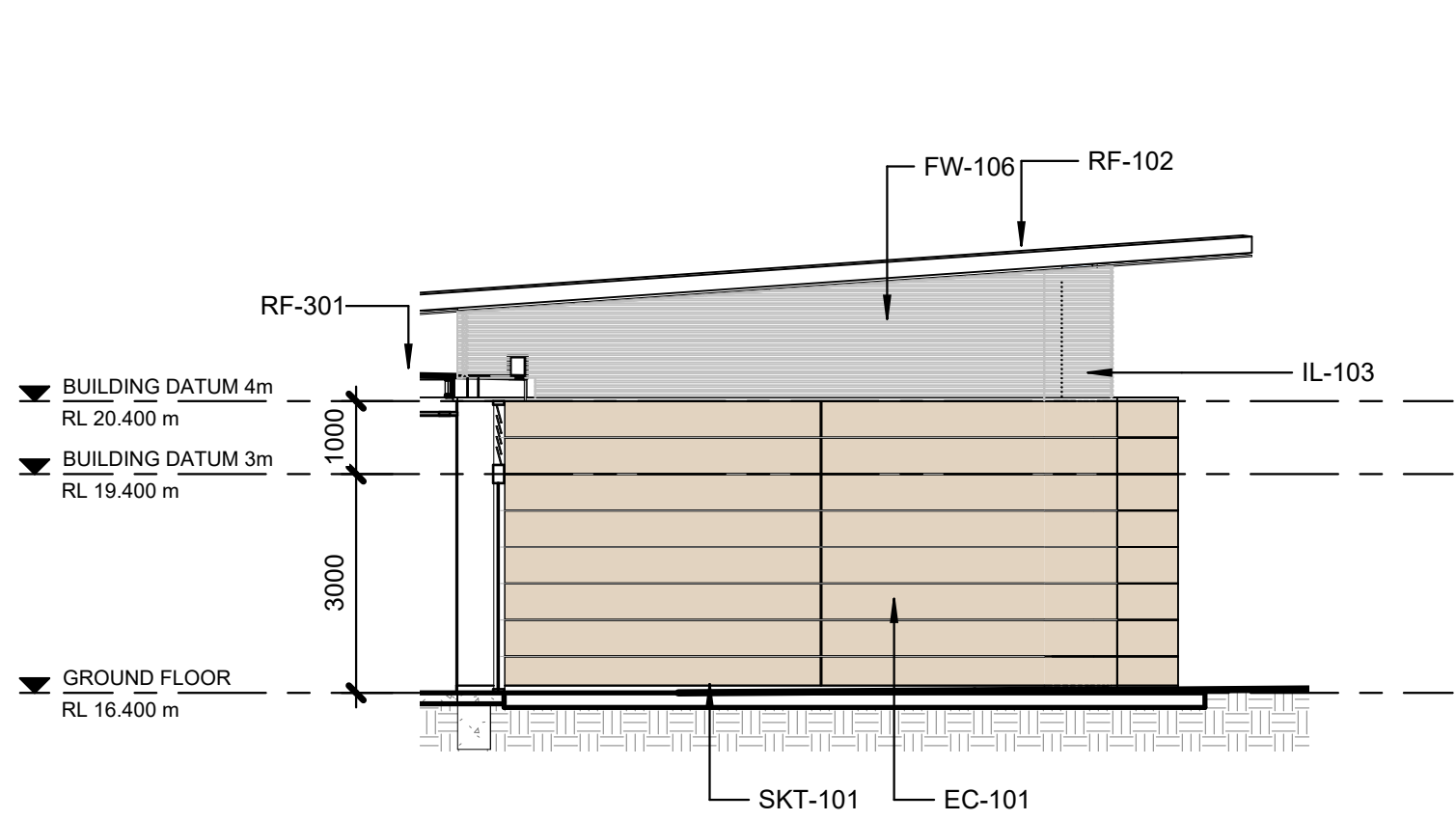
Drawing Title FACADE ELEVATIONS - SHEET 1

Document Control Status:

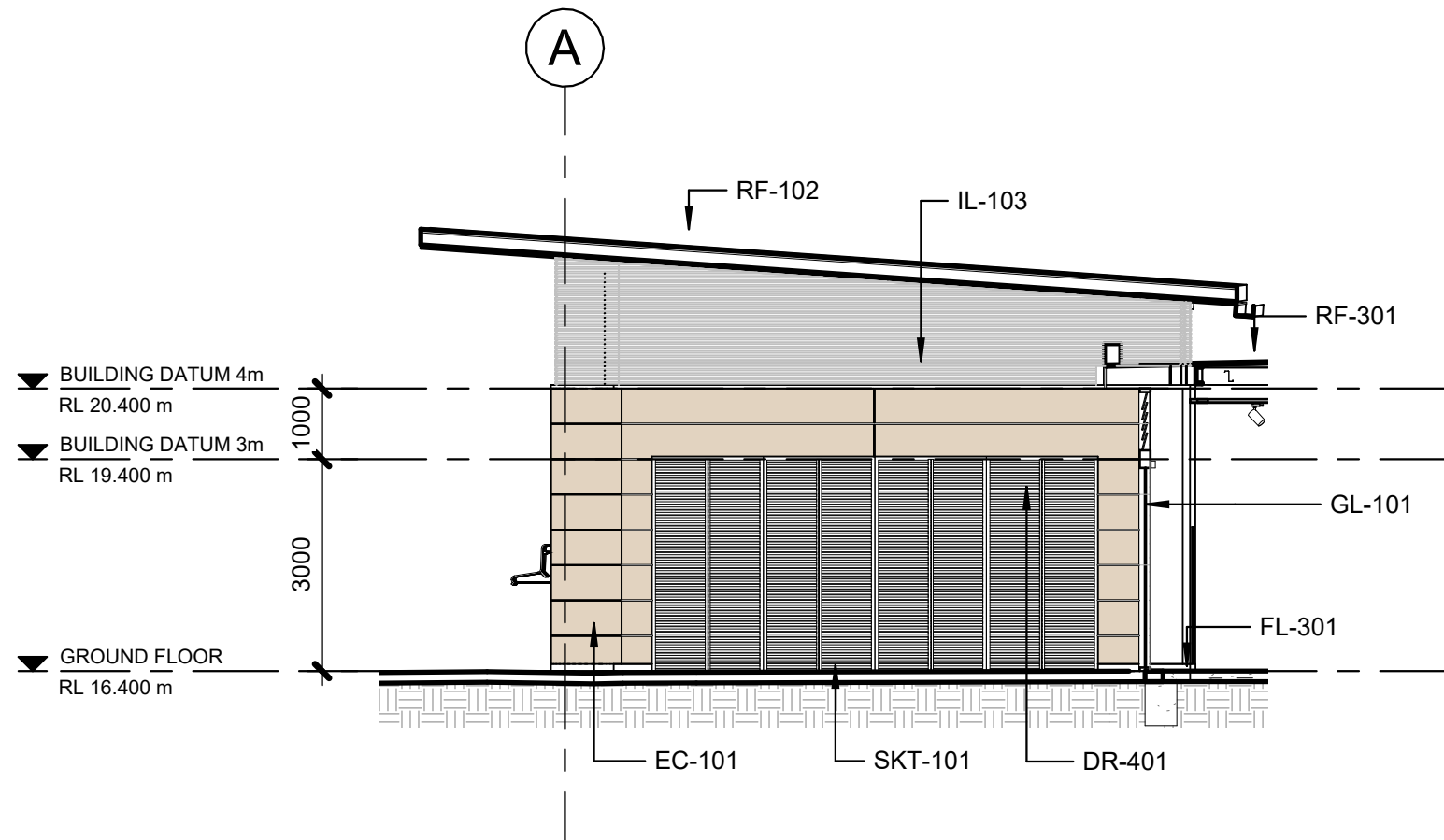
DESIGN DEVELOPMENT

DRAFT

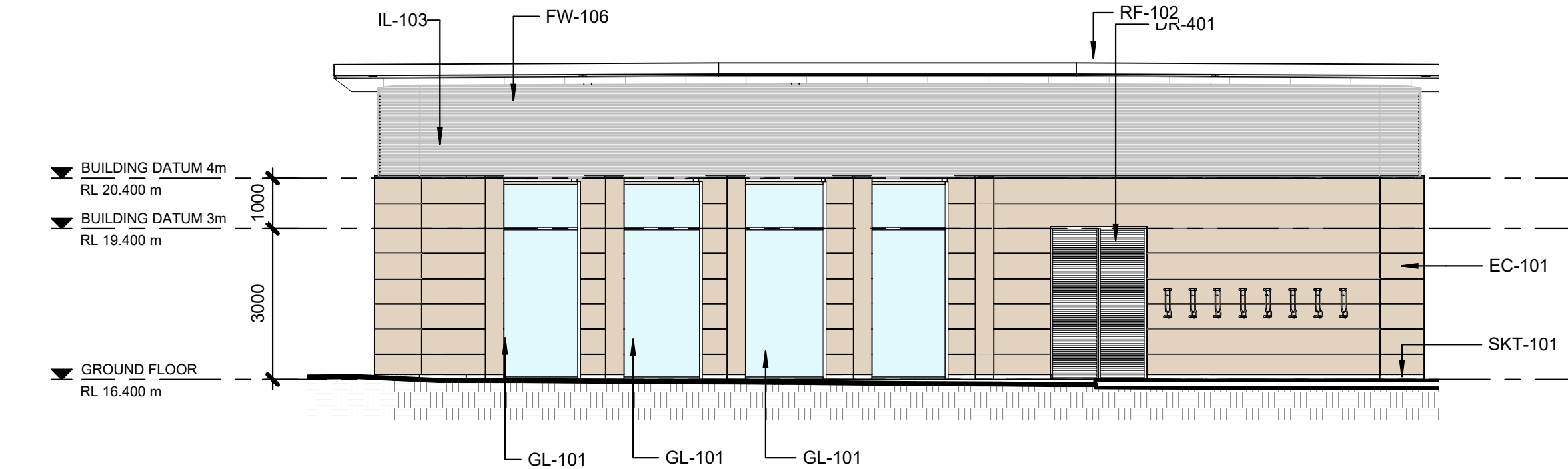
Co-ordinated:	Drawn:
LV	LV
Project Architect:	Scale:
LV	1 : 100 @ A1
Project Director:	Date:
JF	30/09/2024
Drawing Number:	Revision:
A-33-00	2



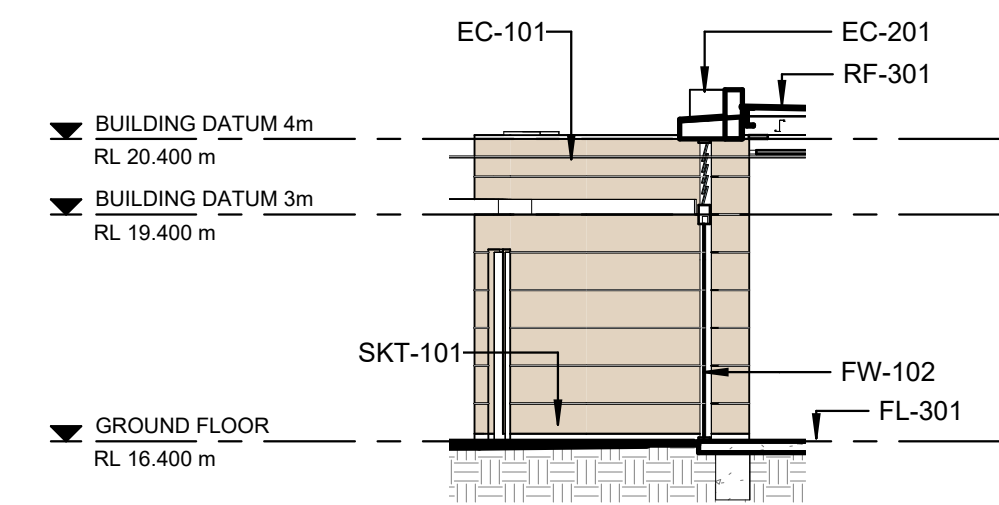
1 GREEN ROOM - FACADE ELEVATION - NORTH
SCALE 1 : 100



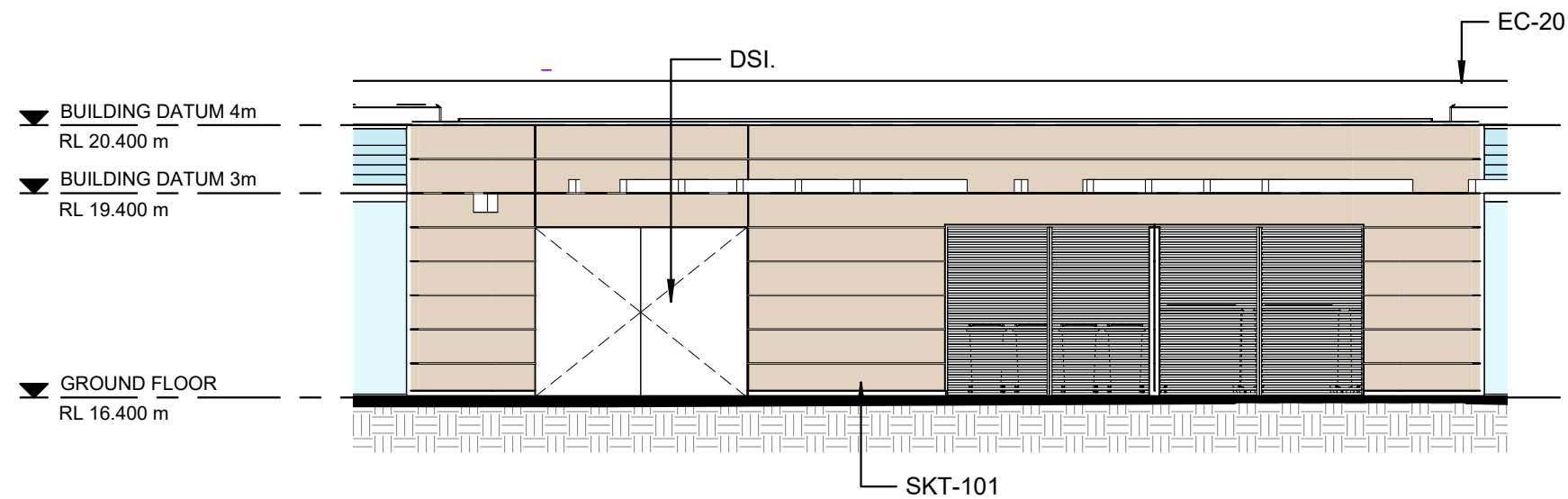
2 MSB - FACADE ELEVATION - SOUTH
SCALE 1 : 100



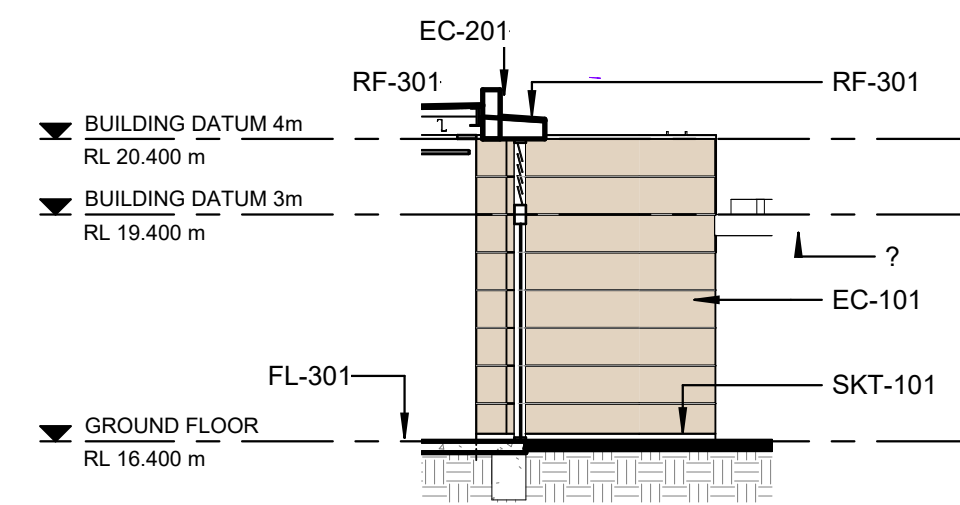
3 GREEN ROOM / SERVICES - FACADE ELEVATION - WEST
SCALE 1 : 100



4 WASTE ROOM - FACADE ELEVATION - NORTH
SCALE 1 : 100



5 WASTE / SERVICES - FACADE ELEVATION - EAST
SCALE 1 : 100



6 SERVICE ROOM - FACADE ELEVATION - WEST
SCALE 1 : 100

KEYNOTE LEGEND	
CODE	DESCRIPTION
DR-401	
DSI	
EC-101	RAMMED EARTH
EC-201	METAL CLADDING
FL-301	POLISHED CONCRETE (SLAB)
FW-102	
FW-106	
GL-101	CLEAR DOUBLE GLAZING
IL-103	PLASTERBOARD - ACOUSTIC
RF-102	INTEGRATED PV ROOF
RF-301	MEMBRANE ROOF WITH BALLAST
SKT-101	ALUMINIUM SKIRTING

© COPYRIGHT COX ARCHITECTURE PTY LTD ACN 002 535 891
ANY FORM OF REPRODUCTION OF THIS DRAWING IN FULL OR IN PART WITHOUT THE WRITTEN PERMISSION OF COX ARCHITECTURE PTY LTD CONSTITUTES AN INFRINGEMENT OF COPYRIGHT

Rev	Description	By	Date
1	Issue for DD Submission	SM	02/07/2024
2	Issued for Information	DL	30/09/2024

Structural Engineer ARUP
Level 5, 151 Clarence Street, Sydney NSW 2000

MEP Engineers ARUP
Level 5, 151 Clarence Street, Sydney NSW 2000

Acoustic Engineer ARUP
Level 5, 151 Clarence Street, Sydney NSW 2000

Civil Engineer ARUP
Level 5, 151 Clarence Street, Sydney NSW 2000

Sustainability and ESD Engineer ARUP
Level 5, 151 Clarence Street, Sydney NSW 2000

Quantity Surveyor WT Partnership
Level 20, 45 Clarence Street, Sydney NSW 2000
T +61 2 9529 7422

Traffic Engineer McLaren Traffic Engineering
Shop 7, 720 Old Princess Highway, Sutherland NSW 2232
T +61 2 9521 7199

Stormwater Engineer JSA Engineering Solutions
Bega NSW 2550
M +61 9409 909 388

BCA/ DDA Consultant ATLIR
8/14 Wornald Street Symonston ACT 2609

Landscape Architect Context
Suite 3, 1775 Myrtle St, Chippendale, NSW
T +61 2 8244 8900

Ecologist Local Environmental Solutions
7 High Crescent Tura Beach, NSW, 2550
M +61 448 235 977

Geotechnical Engineer ACT Geotechnical
Unit 2/157 Newcastle St, Fyshwick, ACT, 2609
T +61 2 6285 1547

Facade Engineer ARUP
Level 5, 151 Clarence Street, Sydney NSW 2000

AV Design ARUP
Level 5, 151 Clarence Street, Sydney NSW 2000

© COPYRIGHT COX ARCHITECTURE PTY LTD ACN 002 535 891

ANY FORM OF REPRODUCTION OF THIS DRAWING IN FULL OR IN PART WITHOUT THE WRITTEN PERMISSION OF COX ARCHITECTURE PTY LTD CONSTITUTES AN INFRINGEMENT OF COPYRIGHT

Structural Engineer **ARUP**
Level 5, 151 Clarence Street, Sydney NSW 2000

MEP Engineers **ARUP**
Level 5, 151 Clarence Street, Sydney NSW 2000

Acoustic Engineer **ARUP**
Level 5, 151 Clarence Street, Sydney NSW 2000

Civil Engineer **ARUP**
Level 5, 151 Clarence Street, Sydney NSW 2000

Sustainability and ESD Engineer
Level 5, 151 Clarence Street, Sydney NSW 2000

Quantity Surveyor **WT Partnership**
Level 26, 45 Clarence Street, Sydney NSW 2000
T +61 2 9929 7422

Traffic Engineer McLaren Traffic Engineering
Shop 7, 720 Old Princess Highway, Sutherland NSW 2232
T +61 2 9521 7199

Stormwater Engineer **JSA Engineering Solutions**
Bega NSW 2550
M +61 0409 909 386

BCA/ DDA Consultant
8/14 Wornald Street Symonston ACT 2609

Landscape Architect
Suite 3, 1/79 Myrtle St, Chippendale, NSW
T +61 2 8244 8900

Ecologist
7 High Crescent Tura Beach, NSW, 2550
M +61 448 235 577

Unit 2/157 Newcastle St, Fyshwick, ACT, 2609
T +61 2 6285 1547

Level 5, 151 Clarence Street, Sydney NSW 2000

Level 5, 151 Clarence Street, Sydney NSW 2000



Client REGIONAL CIRCULARITY
CO-OPERATIVE

Project No. 222111.01

Project	NATIONAL CIRCULARITY CENTRE BEGA
---------	-------------------------------------

Level 1 / Suite 5/106 Auckland St, Bega,NSW, 2550

Drawing Title
FACADE ELEVATIONS - SHEET 3

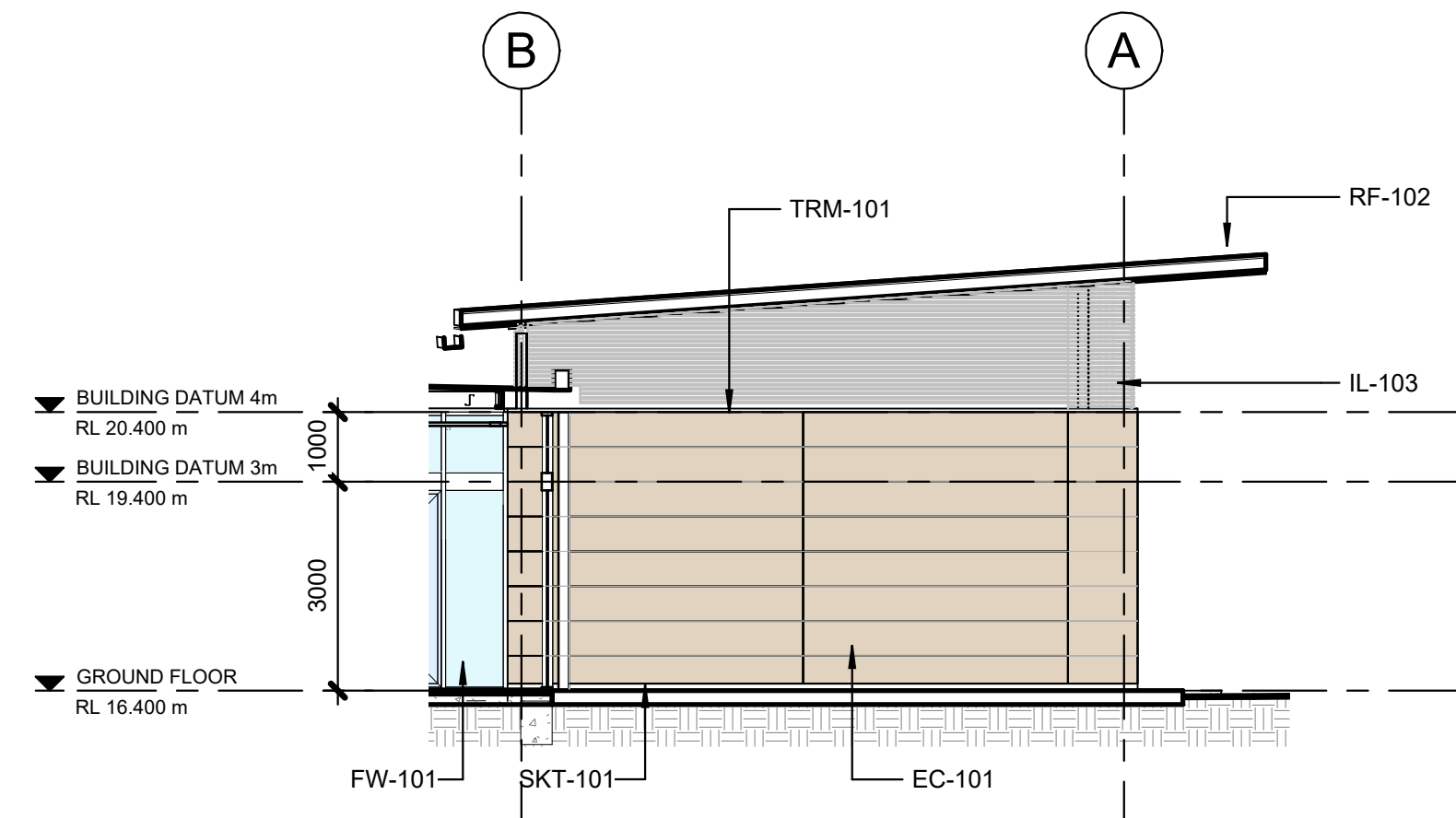
Document Control Status:

DESIGN DEVELOPMENT

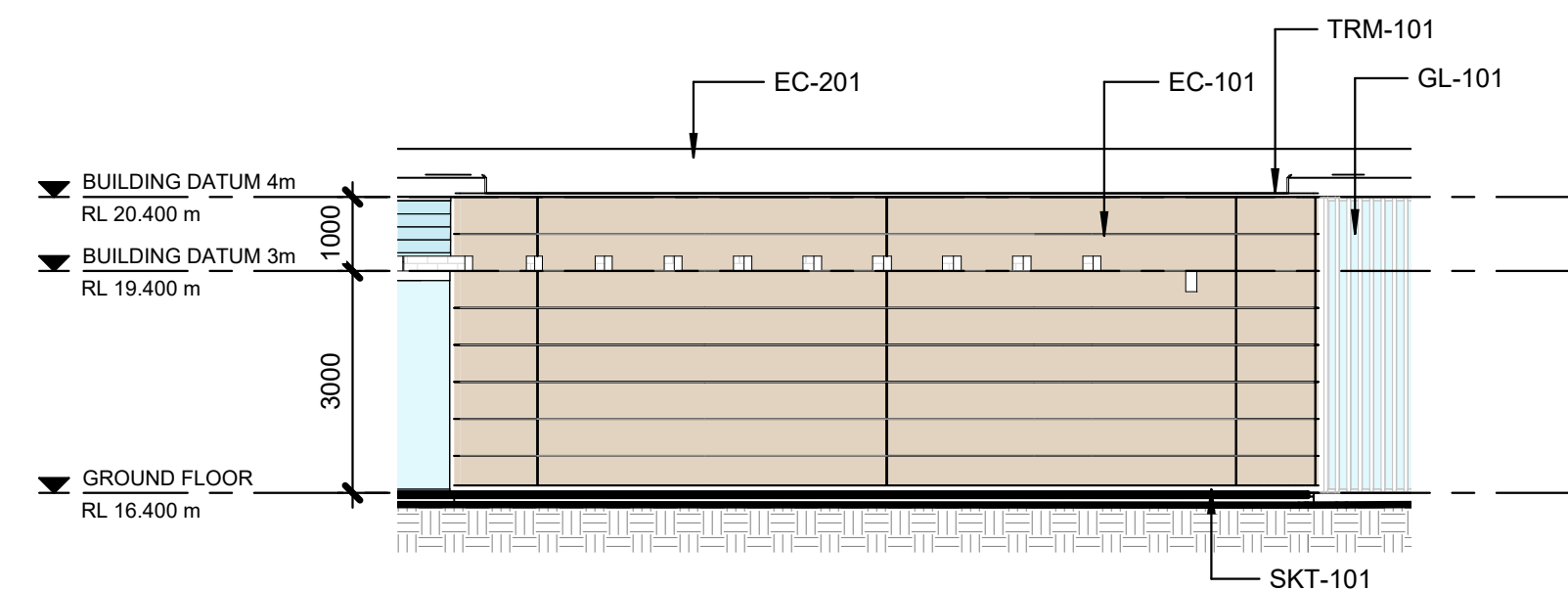
DRAFT



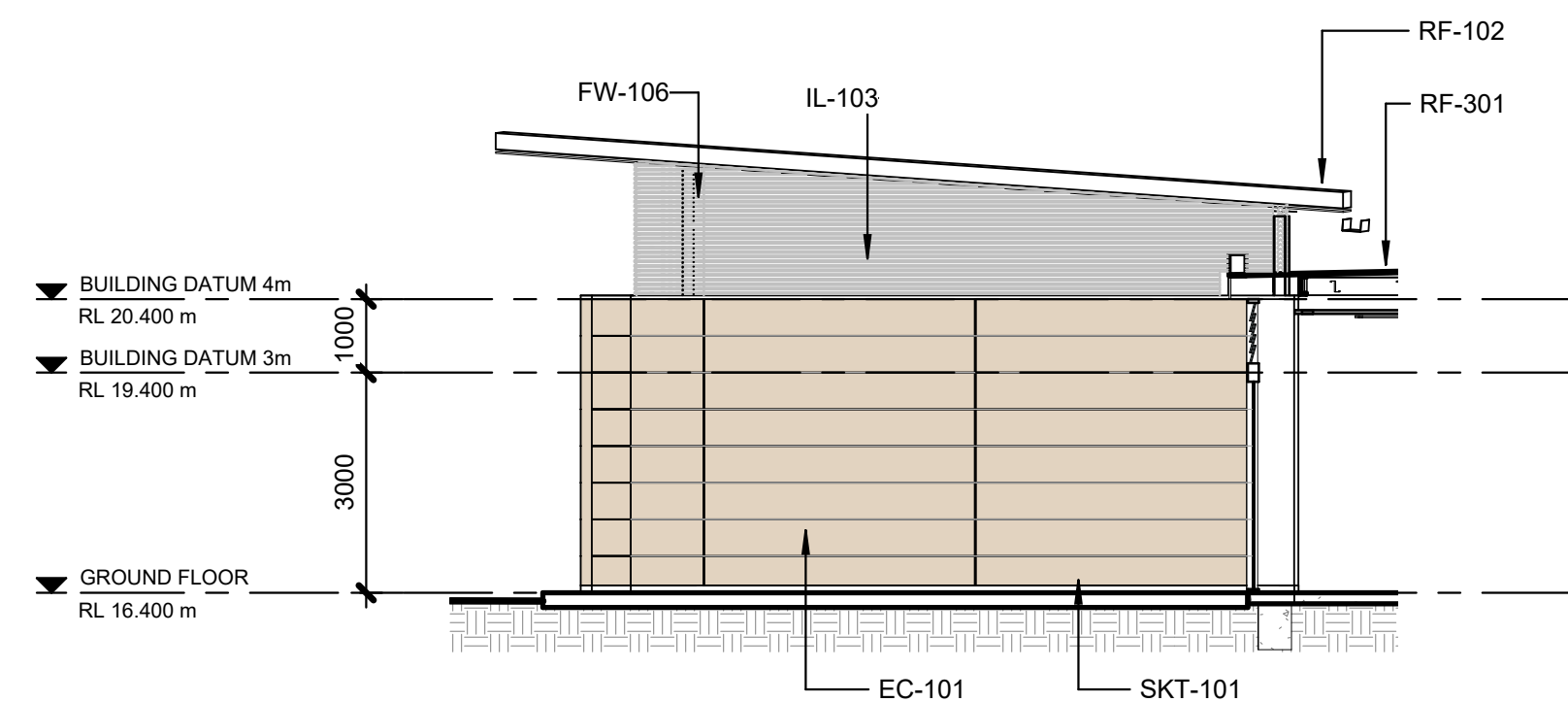
KEYNOTE LEGEND	
CODE	DESCRIPTION
EC-101	RAMMED EARTH
EC-201	METAL CLADDING
FW-101	
FW-106	
GL-101	CLEAR DOUBLE GLAZING
GL-102	FIXED CLEAR GLAZING WITH INTERNAL LOUVRES
IL-103	PLASTERBOARD - ACOUSTIC
RF-102	INTEGRATED PV ROOF
RF-301	MEMBRANE ROOF WITH BALLAST
SKT-101	ALUMINIUM SKIRTING
TRM-101	ALUMINIUM TRIM



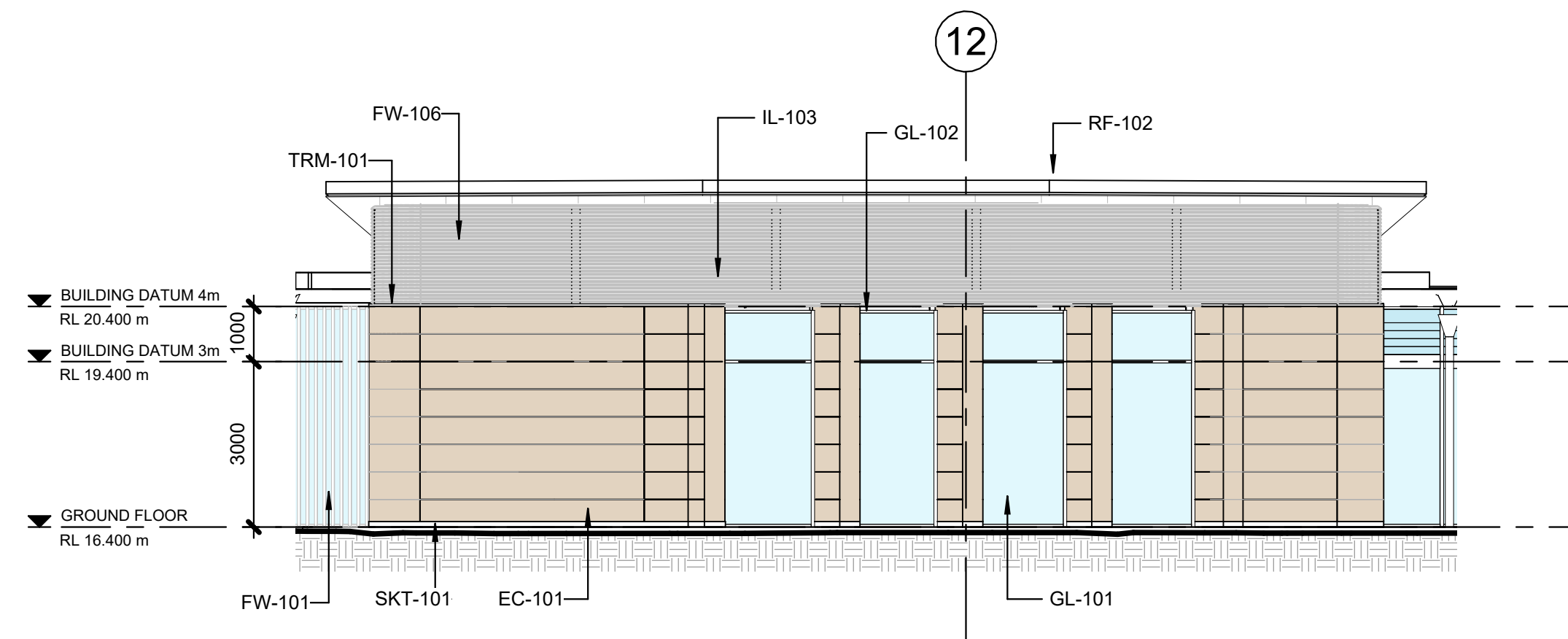
1 OFFICE - FACADE ELEVATION - NORTH
SCALE 1 : 100



2 INFO DESK - FACADE ELEVATION - EAST
SCALE 1 : 100



3 OFFICE - FACADE ELEVATION - SOUTH
SCALE 1 : 100



4 OFFICE - FACADE ELEVATION - WEST
SCALE 1 : 100

© COPYRIGHT COX ARCHITECTURE PTY LTD ACN 002 535 891

ANY FORM OF REPRODUCTION OF THIS DRAWING IN FULL OR IN PART WITHOUT THE WRITTEN PERMISSION OF COX ARCHITECTURE PTY LTD CONSTITUTES AN INFRINGEMENT OF COPYRIGHT

Rev	Description	By	Date
1	Issue for DD Submission	SM	02/07/2024
2	Issued for Information	SM	16/08/2024
3	Issued for Information	DL	30/09/2024

Structural Engineer **ARUP**
Level 5, 151 Clarence Street, Sydney NSW 2000

MEP Engineers **ARUP**
Level 5, 151 Clarence Street, Sydney NSW 2000

Acoustic Engineer **ARUP**
Level 5, 151 Clarence Street, Sydney NSW 2000

Civil Engineer **ARUP**
Level 5, 151 Clarence Street, Sydney NSW 2000

Sustainability and ESD Engineer **ARUP**
Level 5, 151 Clarence Street, Sydney NSW 2000

Quantity Surveyor WT Partnership
Level 26, 45 Clarence Street, Sydney NSW 2000

Traffic Engineer McLaren Traffic Engineering
Shop 7, 720 Old Princess Highway, Sutherland NSW 2232
T +61 2 9521 7199

Stormwater Engineer JSA Engineering Solutions
Bega NSW 2550
M +61 0409 909 386

BCA/ DDA Consultant 8/14 Wormald Street Symonston ACT 2609	ATLR
----------------------------------------------------------------------	-------------

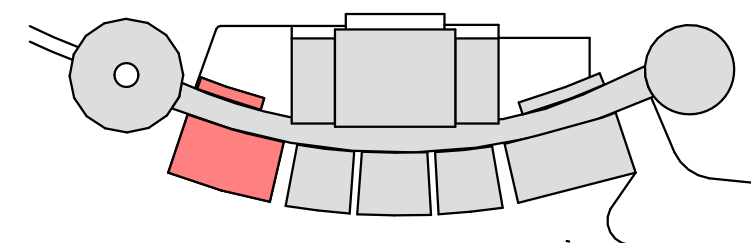
Landscape Architect Suite 3.1/79 Myrtle St, Chippendale, NSW
T +61 2 8244 8900

Ecologist 7 High Crescent Tura Beach, NSW, 2550 M +61 448 235 577	Local Environmental Solutions
--------------------------------------------------------------------------------	--------------------------------------

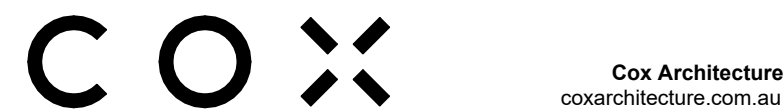
Geotechnical Engineer ACT Geotechnical
Unit 2/157 Newcastle St, Fyshwick, ACT, 2609
T +61 2 6285 1547

Facade Engineer **ARUP**
Level 5, 151 Clarence Street, Sydney NSW 2000

AV Design **ARUP**
Level 5, 151 Clarence Street, Sydney NSW 2000



KEY PLAN



Client REGIONAL CIRCULARITY
CO-OPERATIVE

Project No. 222111.01

Project NATIONAL CIRCULARITY CENTRE
BEGA

Level 1 / Suite 5/106 Auckland St, Bega,NSW, 2550

Acknowledgement

Drawing Title
FACADE ELEVATIONS - SHEET 2

Document Control Status:

DESIGN DEVELOPMENT

DRAFT

Co-ordinated: _____ LV _____

Drawn: _____ LV _____

Project Architect: Scale: 1 : 100 @ A1

Project Director: _____ Date: _____

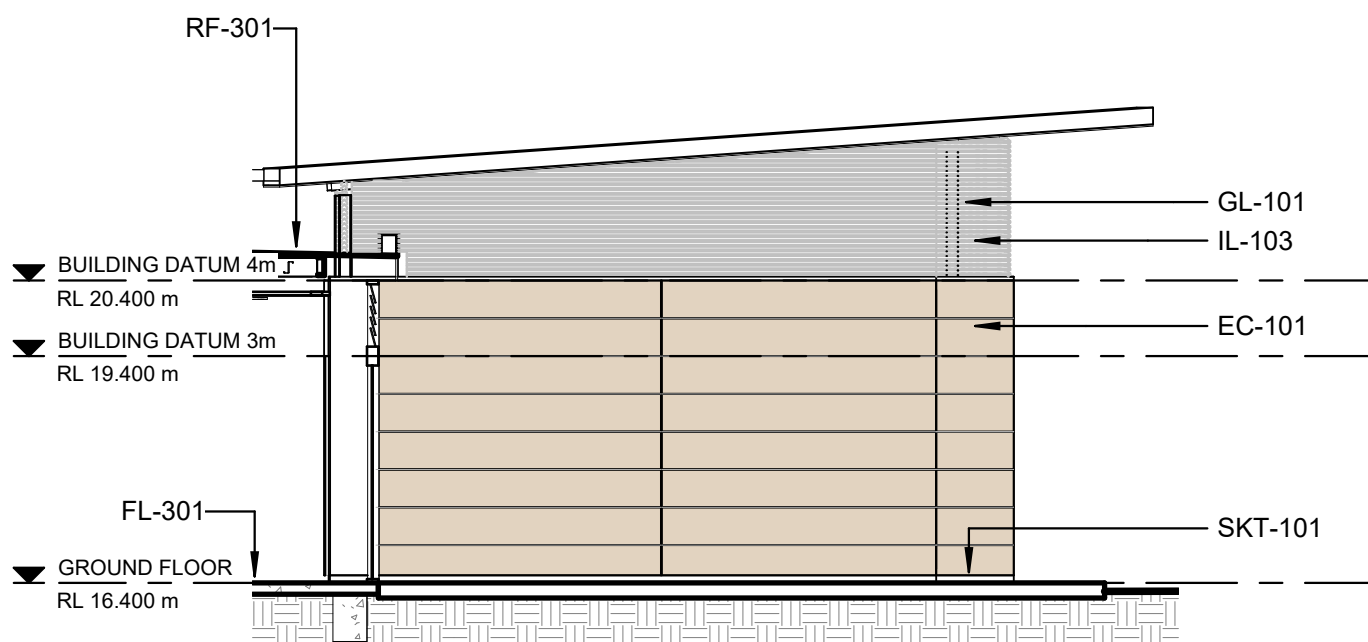
JF 30/09/2024

Drawing Number: _____ **Revision:** _____

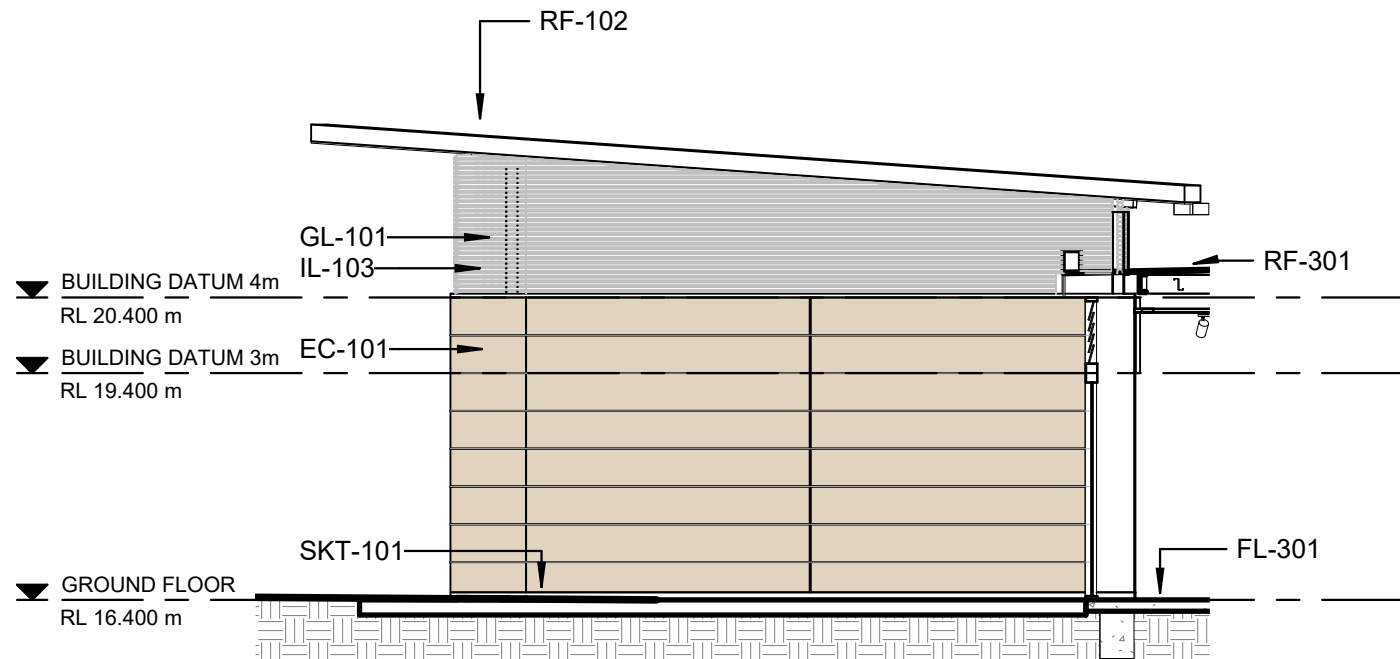
Drawing Number:	Revision:
A-33-01	3



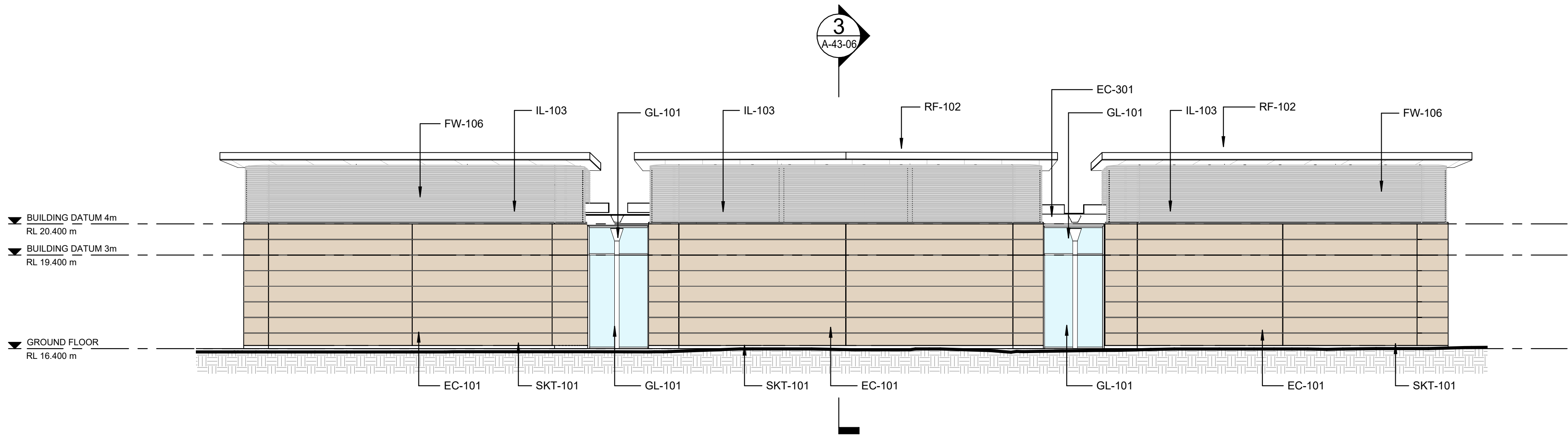
KEYNOTE LEGEND	
CODE	DESCRIPTION
EC-101	RAMMED EARTH
EC-301	
FL-301	POLISHED CONCRETE (SLAB)
FW-106	
GL-101	CLEAR DOUBLE GLAZING
IL-103	PLASTERBOARD - ACOUSTIC
RF-102	INTEGRATED PV ROOF
RF-301	MEMBRANE ROOF WITH BALLAST
SKT-101	ALUMINIUM SKIRTING



1 MUSEUM - FACADE ELEVATION - NORTH
SCALE 1 : 100

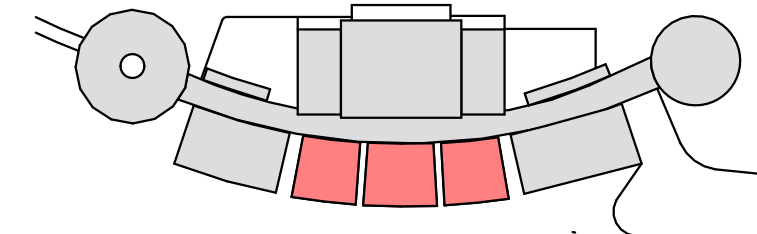


2 MUSEUM - FACADE ELEVATION - SOUTH
SCALE 1 : 100



3 MUSEUM - FACADE ELEVATION - WEST
SCALE 1 : 100

© COPYRIGHT COX ARCHITECTURE PTY LTD ACN 002 535 891			
ANY FORM OF REPRODUCTION OF THIS DRAWING IN FULL OR IN PART WITHOUT THE WRITTEN PERMISSION OF COX ARCHITECTURE PTY LTD CONSTITUTES AN INFRINGEMENT OF COPYRIGHT			
Rev	Description	By	Date
1	Issue for DD Submission	SM	02/07/2024
2	Issued for Information	DL	30/09/2024
Structural Engineer			ARUP
Level 5, 151 Clarence Street, Sydney NSW 2000			
MEP Engineers			ARUP
Level 5, 151 Clarence Street, Sydney NSW 2000			
Acoustic Engineer			ARUP
Level 5, 151 Clarence Street, Sydney NSW 2000			
Civil Engineer			ARUP
Level 5, 151 Clarence Street, Sydney NSW 2000			
Sustainability and ESD Engineer			ARUP
Level 5, 151 Clarence Street, Sydney NSW 2000			
Quantity Surveyor			WT Partnership
Level 28, 45 Clarence Street, Sydney NSW 2000			
T +61 2 9629 7422			
Traffic Engineer			McLaren Traffic Engineering
Shop 7, 720 Old Princess Highway, Sutherland NSW 2232			
T +61 2 9521 7199			
Stormwater Engineer			JSA Engineering Solutions
Bega NSW 2550			
M +61 9409 909 386			
BCA/ DDA Consultant			ATLR
8/14 Wornald Street Symonston ACT 2609			
Landscape Architect			Context
Suite 3, 1775 Myrtle St, Chippendale, NSW			
T +61 2 8244 8900			
Ecologist			Local Environmental Solutions
7 High Crescent Tura Beach, NSW, 2550			
M +61 448 235 977			
Geotechnical Engineer			ACT Geotechnical
Unit 2/157 Newcastle St, Fyshwick, ACT, 2609			
T +61 2 6285 1547			
Facade Engineer			ARUP
Level 5, 151 Clarence Street, Sydney NSW 2000			
AV Design			ARUP
Level 5, 151 Clarence Street, Sydney NSW 2000			



KEY PLAN

Cox Architecture		Nominated Architects:	
70 George Street		Joe Agius No. 6491	
The Rocks NSW 2000		Ramin Jahromi No. 10000	
Australia			
T + 61 2 9267 9599			
coxarchitecture.com.au			

COX

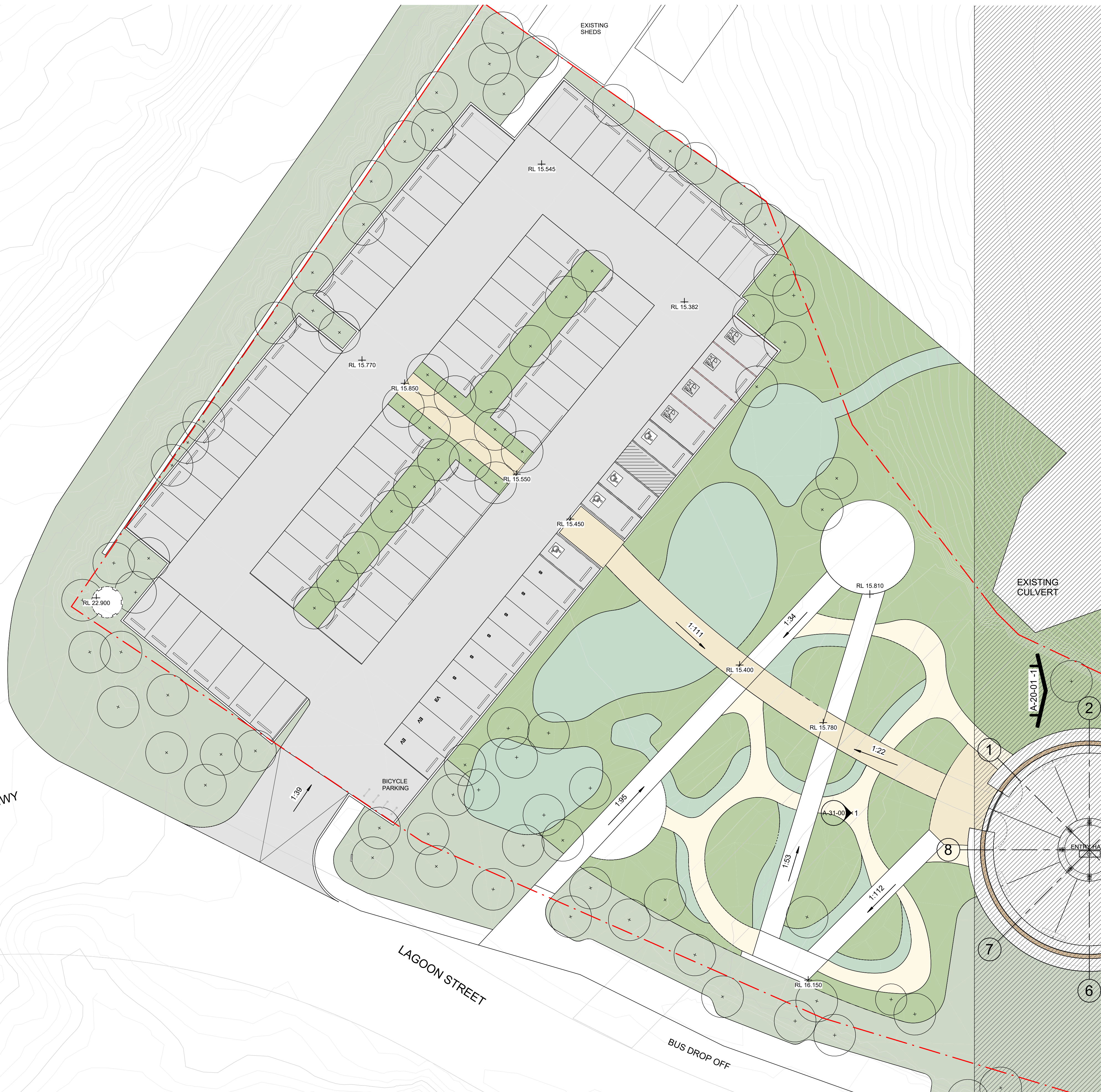
Client	REGIONAL CIRCULARITY CO-OPERATIVE
Project No.	222111.01
Project	NATIONAL CIRCULARITY CENTRE BEGA
Level 1 / Suite 5/106 Auckland St, Bega, NSW, 2550	
Acknowledgement	

Drawing Title	FACADE ELEVATIONS - SHEET 4
---------------	-----------------------------

Document Control Status:	
DESIGN DEVELOPMENT	
DRAFT	

Co-ordinated:	Drawn:
LV	LV
Project Architect:	Scale:
LV	1 : 100 @ A1
Project Director:	Date:
JF	30/09/2024
Drawing Number:	Revision:
A-33-03	2





LEGEND: GA PLANS

SITE BOUNDARY

- EXISTING BUILDINGS
- NEW ON-GRADE CARPARK
- NEW LANDSCAPE ZONE
- NEW TREES
- NEW PEDESTRIAN PATHS
- NEW PEDESTRIAN PATHS (COUNCIL)
- WATER FEATURE
- METAL ROOF
- MEMBRANE ROOF WITH GRAVEL
- PEBBLES
- TIMBER FLOORING
- ENTRANCE MATTING
- EXTERNAL PAVING
- PLAYGROUND SURFACE TBC
- FLOOR TILES

3m SETBACK

ROOM NAME

ROOM TAG WITH NAME, NUMBER

GENERAL DIMENSIONS (DIAGONAL)

CALL OUT DETAIL REFERENCE

BLOCK WALL

STUD WALL

GLAZED WALL / PARTITION

RAMMED EARTH WALL

ABBREVIATIONS

MR - METAL ROOF

MMR - MEMBRANE ROOF

PVR - PV ROOF

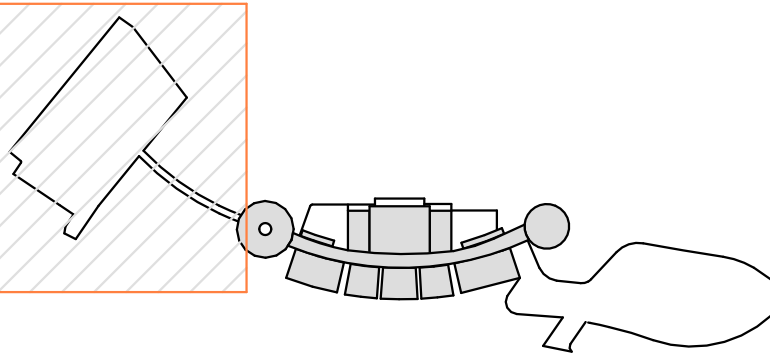
DIMENSIONS ARE TYPICALLY TO PRIMARY ELEMENTS, I.E.:

- BLOCKWORK WALLS - FACE OF BLOCK
- CONCRETE WALLS - FACE OF CONCRETE
- STUD WALLS - FACE OF FRAME WORK
- DOOR FRAMES - OUTER EDGE OF FRAME
- OPENINGS - EDGE OF BLOCKWORK
- MULLIONS - CENTRE OF MULLIONS

CONTRACTOR AND SUBCONTRACTOR SHALL VERIFY ALL DIMENSIONS OF THIS DRAWING AND SITE CONDITIONS PRIOR TO ANY WORK COMMENCING. ALL SHOP DRAWINGS SHALL BE SUBMITTED TO THE ARCHITECT. THE MANUFACTURER SHALL NOT COMMENCE ANY WORKS PRIOR TO THE RETURN OF APPROVED SHOP DRAWINGS SIGNED BY THE RELEVANT CONSULTANT. FIGURED DIMENSIONS TAKE PRECEDENCE OVER SCALED DIMENSIONS. THIS DRAWINGS SHOULD BE READ IN CONJUNCTION WITH ALL RELEVANT CONTRACTS, SPECIFICATIONS AND DRAWINGS. COPYRIGHT OF THIS DRAWING IS VESTED IN THE PRINCIPAL CONSULTANT.

NOTE: THIS DRAWING ISSUE INCLUDING ALL CLOUDED REVISIONS TAGGED AS THIS REVISION IS REVISED FOR ALL TRADE PACKAGES PREVIOUSLY ISSUED.

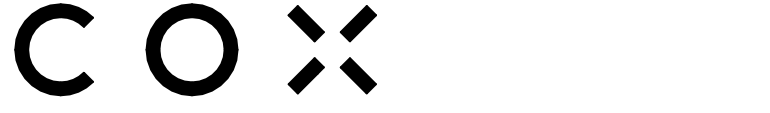
© COPYRIGHT COX ARCHITECTURE PTY LTD ACN 002 535 891			
ANY FORM OF REPRODUCTION OF THIS DRAWING IN FULL OR IN PART WITHOUT THE WRITTEN PERMISSION OF COX ARCHITECTURE PTY LTD CONSTITUTES AN INFRINGEMENT OF COPYRIGHT			
Rev	Description	By	Date
1	Issued for Information	SM	05/06/2024
2	Issued for Information	SM	19/06/2024
3	Issue for DD Submission	SM	02/07/2024
4	Issued for Information	DL	30/09/2024
Structural Engineer		ARUP	
Level 5, 151 Clarence Street, Sydney NSW 2000			
MEP Engineers		ARUP	
Level 5, 151 Clarence Street, Sydney NSW 2000			
Acoustic Engineer		ARUP	
Level 5, 151 Clarence Street, Sydney NSW 2000			
Civil Engineer		ARUP	
Level 5, 151 Clarence Street, Sydney NSW 2000			
Sustainability and ESD Engineer		ARUP	
Level 5, 151 Clarence Street, Sydney NSW 2000			
Quantity Surveyor		WT Partnership	
Level 20, 45 Clarence Street, Sydney NSW 2000			
Traffic Engineer		McLaren Traffic Engineering	
Shop 7, 720 Old Princess Highway, Sutherland NSW 2232			
Stormwater Engineer		JSA Engineering Solutions	
Bega NSW 2550			
BCA/ DDA Consultant		ATLR	
8/14 Wornald Street Symonston ACT 2609			
Landscape Architect		Context	
Suite 1, 170 Myrtle St, Chippendale, NSW			
Ecologist		Local Environmental Solutions	
7 High Crescent Tura Beach, NSW, 2550			
Geotechnical Engineer		ACT Geotechnical	
Unit 2/157 Newmarket St, Rydalmere, ACT, 2609			
Facade Engineer		ARUP	
Level 5, 151 Clarence Street, Sydney NSW 2000			
AV Design		ARUP	
Level 5, 151 Clarence Street, Sydney NSW 2000			



KEY PLAN

Cox Architecture
70 George Street
The Rocks NSW 2000
Australia
T + 61 2 9267 9599
coxarchitecture.com.au

Nominated Architects:
Joe Agius No. 6491
Ramin Jahromi No. 10000



Client
REGIONAL CIRCULARITY
CO-OPERATIVE

Project No.
222111.01

Project
NATIONAL CIRCULARITY CENTRE
BEGA

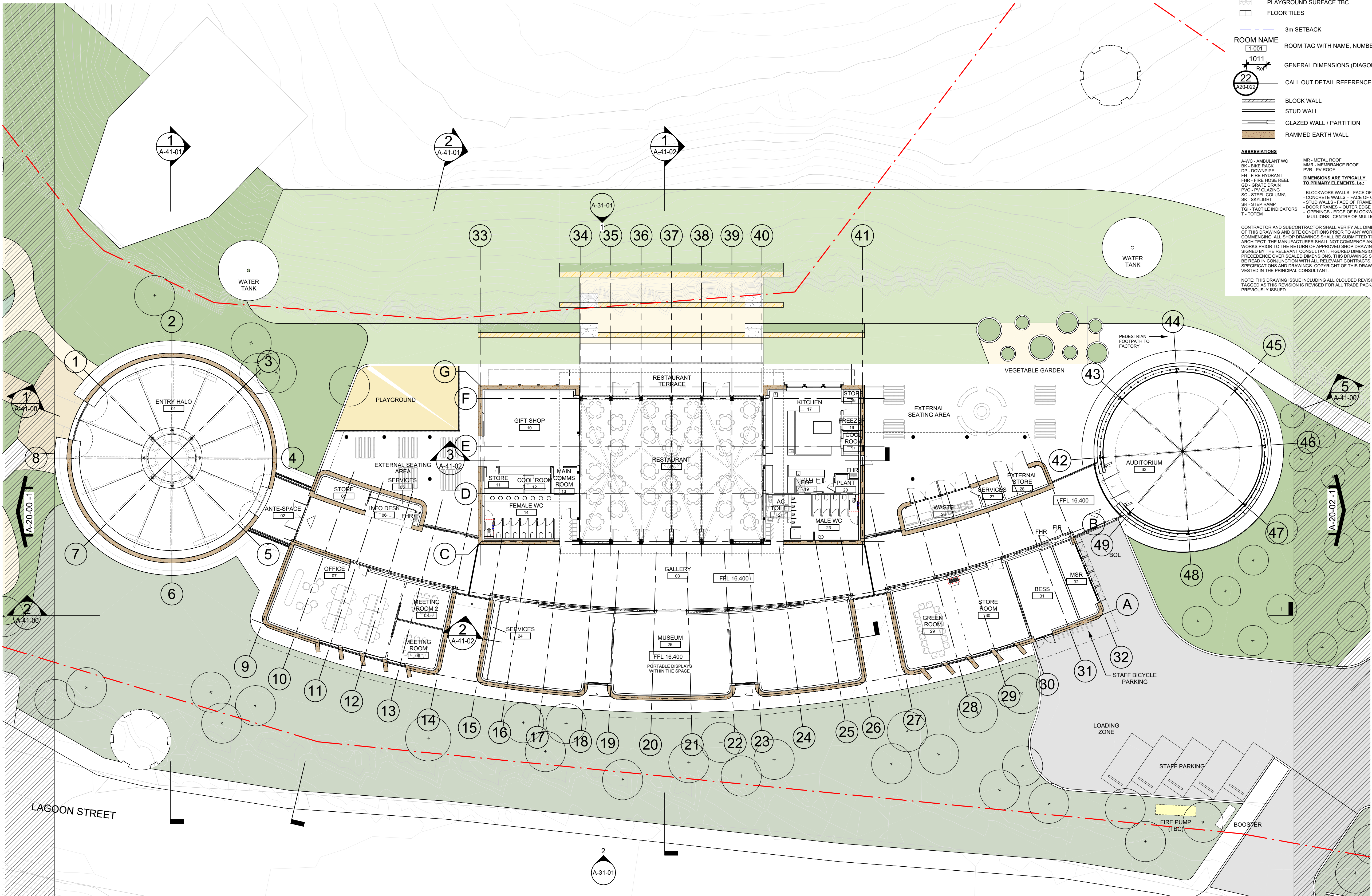
Level 1 / Suite 5/106 Auckland St, Bega, NSW, 2550

Acknowledgement

Drawing Title
GROUND FLOOR PLAN - ZONE A

Document Control Status:
DESIGN DEVELOPMENT
DRAFT

Co-ordinated:	Drawn:
LV	SM
Project Architect:	Scale:
LV	As indicated @ A1
Project Director:	Date:
JF	30/09/2024
Drawing Number:	Revision:
A-20-00	4



LEGEND: GA PLANS

SITE BOUNDARY

- EXISTING BUILDINGS
- NEW ON-GRADE CARPARK
- NEW LANDSCAPE ZONE
- NEW TREES
- NEW PEDESTRIAN PATHS
- NEW PEDESTRIAN PATHS (COUNCIL)
- WATER FEATURE
- METAL ROOF
- MEMBRANE ROOF WITH GRAVEL
- PEBBLES
- TIMBER FLOORING
- ENTRANCE MATTING
- EXTERNAL PAVING
- PLAYGROUND SURFACE TBC
- FLOOR TILES

ROOM NAME

ROOM TAG WITH NAME, NUMBER

GENERAL DIMENSIONS (DIAGONAL)

CALL OUT DETAIL REFERENCE

BLOCK WALL

STUD WALL

GLAZED WALL / PARTITION

RAMMED EARTH WALL

ABBREVIATIONS

MR - METAL ROOF

MMR - MEMBRANE ROOF

PVR - PV ROOF

CONCRETE WALLS - FACE OF BLOCK

STUD WALLS - FACE OF FRAME WORK

DOOR FRAMES - OUTER EDGE OF FRAME

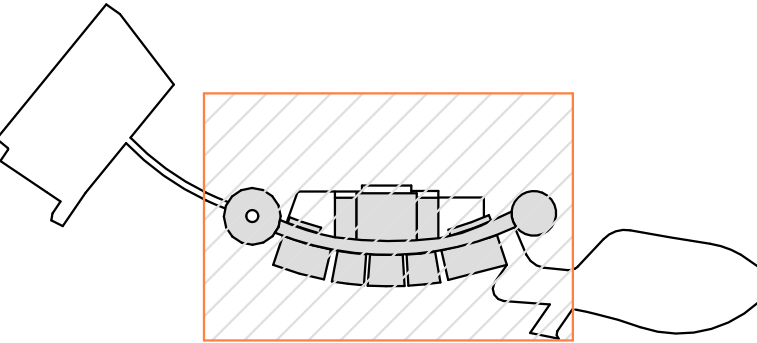
OPENINGS - EDGE OF BLOCKWORK

MULLIONS - CENTRE OF MULLIONS

CONTRACTOR AND SUBCONTRACTOR SHALL VERIFY ALL DIMENSIONS OF THIS DRAWING AND SITE CONDITIONS PRIOR TO ANY WORK COMMENCING. ALL SHOP DRAWINGS SHALL BE SUBMITTED TO THE ARCHITECT. THE MANUFACTURER SHALL NOT COMMENCE ANY WORKS PRIOR TO THE RETURN OF APPROVED SHOP DRAWINGS SIGNED BY THE RELEVANT CONSULTANT. FIGURED DIMENSIONS TAKE PRECEDENCE OVER SCALED DIMENSIONS. THIS DRAWINGS SHOULD BE READ IN CONJUNCTION WITH ALL RELEVANT CONTRACTS SPECIFICATIONS AND DRAWINGS. COPYRIGHT OF THIS DRAWING IS VESTED IN THE PRINCIPAL CONSULTANT.

NOTE: THIS DRAWING ISSUE INCLUDING ALL CLOUDED REVISIONS TAGGED AS THIS REVISION IS REVISED FOR ALL TRADE PACKAGES PREVIOUSLY ISSUED.

© COPYRIGHT COX ARCHITECTURE PTY LTD ACN 002 535 891			
ANY FORM OF REPRODUCTION OF THIS DRAWING IN FULL OR IN PART WITHOUT THE WRITTEN PERMISSION OF COX ARCHITECTURE PTY LTD CONSTITUTES AN INFRINGEMENT OF COPYRIGHT			
Rev	Description	By	Date
1	Issued for Information	SM	05/06/2024
2	Issued for Information	SM	19/06/2024
3	Issue for DD Submission	SM	02/07/2024
4	Issued for Information	DL	30/09/2024
Structural Engineer		ARUP	
Level 5, 151 Clarence Street, Sydney NSW 2000			
MEP Engineers		ARUP	
Level 5, 151 Clarence Street, Sydney NSW 2000			
Acoustic Engineer		ARUP	
Level 5, 151 Clarence Street, Sydney NSW 2000			
Civil Engineer		ARUP	
Level 5, 151 Clarence Street, Sydney NSW 2000			
Sustainability and ESD Engineer		ARUP	
Level 5, 151 Clarence Street, Sydney NSW 2000			
Quantity Surveyor		WT Partnership	
Level 28, 45 Clarence Street, Sydney NSW 2000			
T +61 2 9529 7422			
Traffic Engineer		McLaren Traffic Engineering	
Shop 7, 720 Old Princess Highway, Sutherland NSW 2232			
T +61 2 9521 7199			
Stormwater Engineer		JSA Engineering Solutions	
Bega NSW 2550			
M +61 9409 909 388			
BCA/ DDA Consultant		ATLR	
8/14 Wornald Street Symonston ACT 2609			
Landscape Architect		Context	
Suite 1, 170 Myrtle St, Chippendale, NSW			
T +61 2 8244 8900			
Ecologist		Local Environmental Solutions	
7 High Crescent Tura Beach, NSW, 2550			
M +61 448 235 977			
Geotechnical Engineer		ACT Geotechnical	
Unit 2/157 Newcastle St, Fyfeville, ACT, 2609			
T +61 2 6285 1547			
Facade Engineer		ARUP	
Level 5, 151 Clarence Street, Sydney NSW 2000			
AV Design		ARUP	
Level 5, 151 Clarence Street, Sydney NSW 2000			



KEY PLAN

Cox Architecture
70 George Street
The Rocks NSW 2000
Australia
T + 61 2 9267 9599
coxarchitecture.com.au

Nominated Architects:
Joe Agius No. 6491
Ramin Jahromi No. 10000

COX

Client
REGIONAL CIRCULARITY
CO-OPERATIVE

Project No.
222111.01

Project
NATIONAL CIRCULARITY CENTRE
BEGA

Level 1 / Suite 5/106 Auckland St, Bega, NSW, 2550

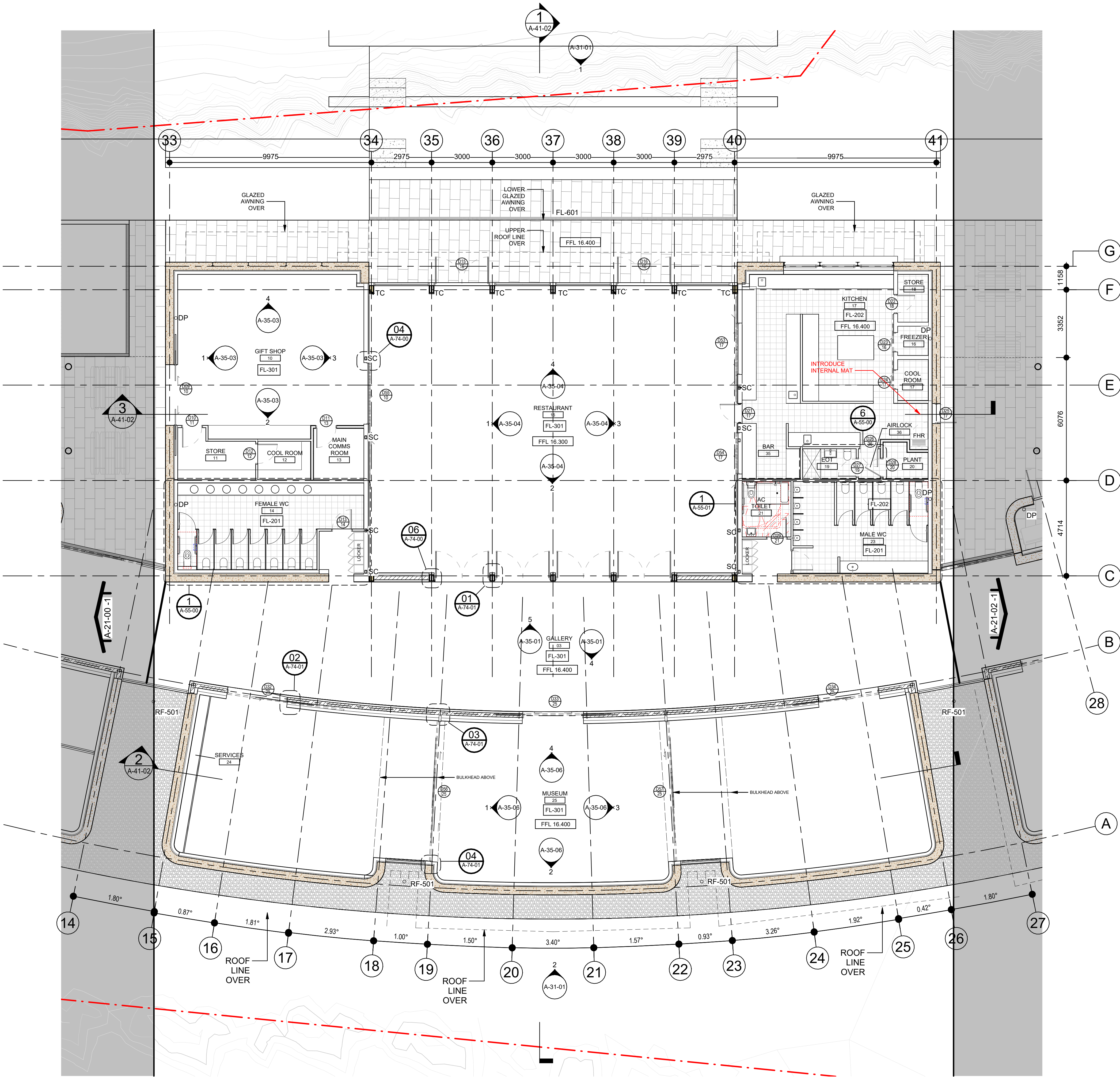
Acknowledgement

Drawing Title
GROUND FLOOR PLAN - ZONE B

Document Control Status:

DESIGN DEVELOPMENT
DRAFT

Co-ordinated:	Drawn:
LV	SM
Project Architect:	Scale:
LV	As indicated @ A1
Project Director:	Date:
JF	30/09/2024
Drawing Number:	Revision:
A-20-01	4



LEGEND: GA PLANS

- SITE BOUNDARY
- NEW ON-GRADE CARPARK
- NEW PEDESTRIAN PATHS (COUNCIL)
- WATER FEATURE
- PEBBLES
- ROOM NAME
T-001
- ROOM TAG WITH NAME, NUMBER
- 1000 Ref
- 22 A20-022
- CALL OUT DETAIL REFERENCE
- D01 001
- DOOR NUMBER TAG WITH ROOM NUMBER
- BLOCK WALL
- STUD WALL
- GLAZED WALL / PARTITION
- RAMMED EARTH WALL

ABBREVIATIONS

A-WC - AMBULANT WC
BK - BIKE RACK
DP - DOWNPIPE
FH - FIRE HYDRANT
FHR - FIRE HOSE REEL
GD - GRATE DRAIN
PVG - PV GLAZING
SC - STEEL COLUMN
SK - SKYLIGHT
SR - STEP RAMP
TGI - TACTILE INDICATORS
T - TOTEM

MR - METAL ROOF
MMR - MEMBRANCE ROOF
PVR - PV ROOF

DIMENSIONS ARE TYPICALLY TO PRIMARY ELEMENTS, I.E.:
- BLOCKWORK WALLS - FACE OF BLOCK
- CONCRETE WALLS - FACE OF CONCRETE
- STUD WALLS - FACE OF FRAME WORK
- DOOR FRAMES - OUTER EDGE OF FRAME
- OPENINGS - EDGE OF BLOCKWORK
- MULLIONS - CENTRE OF MULLIONS

CONTRACTOR AND SUBCONTRACTOR SHALL VERIFY ALL DIMENSIONS OF THIS DRAWING AND SITE CONDITIONS PRIOR TO ANY WORK COMMENCING. ALL SHOP DRAWINGS SHALL BE SUBMITTED TO THE ARCHITECT. THE MANUFACTURER SHALL NOT COMMENCE ANY WORKS PRIOR TO THE RETURN OF APPROVED SHOP DRAWINGS SIGNED BY THE RELEVANT CONSULTANT. FIGURED DIMENSIONS TAKE PRECEDENCE OVER SCALED DIMENSIONS. THIS DRAWINGS SHOULD BE READ IN CONJUNCTION WITH ALL RELEVANT CONTRACTS, SPECIFICATIONS AND DRAWINGS. COPYRIGHT OF THIS DRAWING IS VESTED IN THE PRINCIPAL CONSULTANT.

NOTE: THIS DRAWING ISSUE INCLUDING ALL CLOUDED REVISIONS TAGGED AS THIS REVISION IS REVISED FOR ALL TRADE PACKAGES PREVIOUSLY ISSUED.

DIMENSIONS ARE TYPICALLY TO PRIMARY ELEMENTS, I.E.:
- BLOCKWORK WALLS - FACE OF BLOCK
- CONCRETE WALLS - FACE OF CONCRETE
- STUD WALLS - FACE OF FRAME WORK
- DOOR FRAMES - OUTER EDGE OF FRAME
- OPENINGS - EDGE OF BLOCKWORK
- MULLIONS - CENTRE OF MULLIONS

FLOOR FINISHES LEGEND

FL-201 - FLOOR TILE - AMENITIES
FL-202 - FLOOR TILE - KITCHEN
FL-301 - POLISHED CONCRETE
FL-601 - DRAINED MATWELL

© COPYRIGHT COX ARCHITECTURE PTY LTD ACN 002 535 891
ANY FORM OF REPRODUCTION OF THIS DRAWING IN FULL OR IN PART WITHOUT THE WRITTEN PERMISSION OF COX ARCHITECTURE PTY LTD CONSTITUTES AN INFRINGEMENT OF COPYRIGHT

Rev	Description	By	Date
1	Issued for Information	SM	05/06/2024
2	Issued for Information	SM	19/06/2024
3	Issue for DD Submission	SM	02/07/2024
4	Issued for Information	DL	13/09/2024
5	Issued for Information	DL	30/09/2024

Structural Engineer ARUP
Level 5, 151 Clarence Street, Sydney NSW 2000

MEP Engineers ARUP
Level 5, 151 Clarence Street, Sydney NSW 2000

Acoustic Engineer ARUP
Level 5, 151 Clarence Street, Sydney NSW 2000

Civil Engineer ARUP
Level 5, 151 Clarence Street, Sydney NSW 2000

Sustainability and ESD Engineer ARUP
Level 5, 151 Clarence Street, Sydney NSW 2000

Quantity Surveyor WT Partnership
Level 28, 45 Clarence Street, Sydney NSW 2000
T +61 2 9292 7422

Traffic Engineer McLaren Traffic Engineering
Shop 7, 720 Old Princess Highway, Sutherland NSW 2232
T +61 2 9521 7199

Stormwater Engineer JSA Engineering Solutions
Bega NSW 2550
M +61 9409 909 388

BCA DDA Consultant ATLR
8/14 Wornald Street Symonston ACT 2609

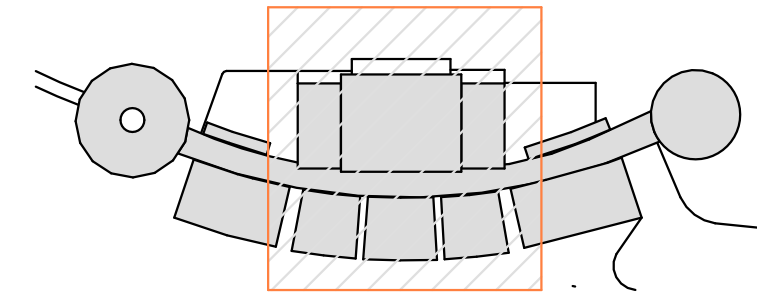
Landscape Architect Context
Suite 1/179 Myrtle St, Chippendale, NSW
T +61 2 8244 8900

Ecologist Local Environmental Solutions
7 High Crescent Tura Beach, NSW, 2550
M +61 448 235 977

Geotechnical Engineer ACT Geotechnical
Unit 2/157 Newcastle St, Fyshwick, ACT, 2609
T +61 2 6285 1547

Facade Engineer ARUP
Level 5, 151 Clarence Street, Sydney NSW 2000

AV Design ARUP
Level 5, 151 Clarence Street, Sydney NSW 2000



KEY PLAN

Cox Architecture
70 George Street
The Rocks NSW 2000
Australia
T + 61 2 9267 9599
coxarchitecture.com.au

Nominated Architects:
Joe Agius No. 6491
Ramin Jahromi No. 10000

COX

Client REGIONAL CIRCULARITY CO-OPERATIVE

Project No. 222111.01

Project NATIONAL CIRCULARITY CENTRE BEGA

Level 1 / Suite 5/106 Auckland St, Bega, NSW, 2550

Acknowledgement

Drawing Title GROUND FLOOR PLAN - ZONE B2

Document Control Status:

DESIGN DEVELOPMENT

DRAFT

Co-ordinated: LV Drawn: SM
Project Architect: LV Scale: 1:100 @ A1
Project Director: JF Date: 30/09/2024
Drawing Number: A-21-01 Revision: 5

PLOT STAMP DATE: 30/09/2024 6:28:45 PM



LEGEND: GA PLANS

- SITE BOUNDARY
- EXISTING BUILDINGS
- NEW ON-GRADE CARPARK
- NEW LANDSCAPE ZONE
- NEW TREES
- NEW PEDESTRIAN PATHS
- NEW PEDESTRIAN PATHS (COUNCIL)
- WATER FEATURE
- METAL ROOF
- MEMBRANE ROOF WITH GRAVEL
- PEBBLES
- TIMBER FLOORING
- ENTRANCE MATTING
- EXTERNAL PAVING
- PLAYGROUND SURFACE TBC
- FLOOR TILES
- 3m SETBACK
- ROOM NAME
1-001
- ROOM TAG WITH NAME, NUMBER
1011
- GENERAL DIMENSIONS (DIAGONAL)
- CALL OUT DETAIL REFERENCE
22
A20-102
- BLOCK WALL
- STUD WALL
- GLAZED WALL / PARTITION
- RAMMED EARTH WALL

ABBREVIATIONS

- A-WC - AMBULANT WC
BK - BIKE RACK
DP - DOWNPIPE
PH - FIRE HYDRANT
PHR - FIRE HOSE REEL
GD - GRATE DRAIN
PVG - PV GLAZING
SC - STEEL COLUMN
SK - SKYLIGHT
SR - STEP RAMP
TGI - TACTILE INDICATORS
T - TOTEM
- MR - METAL ROOF
MMR - MEMBRANCE ROOF
PVR - PV ROOF
- DIMENSIONS ARE TYPICALLY TO PRIMARY ELEMENTS, I.E.
- BLOCKWORK WALLS - FACE OF BLOCK
 - CONCRETE WALLS - FACE OF CONCRETE
 - STUD WALLS - FACE OF FRAME WORK
 - DOOR FRAMES - OUTER EDGE OF FRAME
 - OPENINGS - EDGE OF BLOCKWORK
 - MULLIONS - CENTRE OF MULLIONS

CONTRACTOR AND SUBCONTRACTOR SHALL VERIFY ALL DIMENSIONS OF THIS DRAWING AND SITE CONDITIONS PRIOR TO ANY WORK COMMENCING. ALL SHOP DRAWINGS SHALL BE SUBMITTED TO THE ARCHITECT. THE MANUFACTURER SHALL NOT COMMENCE ANY WORKS PRIOR TO THE RETURN OF APPROVED SHOP DRAWINGS SIGNED BY THE RELEVANT CONSULTANT. FIGURED DIMENSIONS TAKE PRECEDENCE OVER SCALED DIMENSIONS. THIS DRAWINGS SHOULD BE READ IN CONJUNCTION WITH ALL RELEVANT CONTRACTS, SPECIFICATIONS AND DRAWINGS. COPYRIGHT OF THIS DRAWING IS VESTED IN THE PRINCIPAL CONSULTANT.

NOTE: THIS DRAWING ISSUE INCLUDING ALL CLOUDED REVISIONS TAGGED AS THIS REVISION IS REVISED FOR ALL TRADE PACKAGES PREVIOUSLY ISSUED.

© COPYRIGHT COX ARCHITECTURE PTY LTD ACN 002 535 891

ANY FORM OF REPRODUCTION OF THIS DRAWING IN FULL OR IN PART WITHOUT THE WRITTEN PERMISSION OF COX ARCHITECTURE PTY LTD CONSTITUTES AN INFRINGEMENT OF COPYRIGHT

Rev	Description	By	Date
1	Issued for Information	SM	05/06/2024
2	Issued for Information	SM	19/06/2024
3	Issue for DD Submission	SM	02/07/2024
4	Issued for Information	DL	30/09/2024

Structural Engineer
Level 5, 151 Clarence Street, Sydney NSW 2000

ARUP

MEP Engineers
Level 5, 151 Clarence Street, Sydney NSW 2000

ARUP

Acoustic Engineer
Level 5, 151 Clarence Street, Sydney NSW 2000

ARUP

Civil Engineer
Level 5, 151 Clarence Street, Sydney NSW 2000

ARUP

Sustainability and ESD Engineer
Level 5, 151 Clarence Street, Sydney NSW 2000

ARUP

Quantity Surveyor
Level 20, 45 Clarence Street, Sydney NSW 2000

WT Partnership

Traffic Engineer
Shop 7, 720 Old Princess Highway, Sutherland NSW 2232

McLaren Traffic Engineering

Stormwater Engineer
Bega NSW 2550

JSA Engineering Solutions

BCA/ DDA Consultant
8/14 Wornald Street Symonston ACT 2609

ATLR

Landscape Architect
Suite 1, 170 Myrtle St, Chippendale, NSW

Context

Ecologist
7 High Crescent Tura Beach, NSW, 2550

Local Environmental Solutions

Geotechnical Engineer
Unit 2/157 Newcastle St, Fyfeville, ACT, 2609

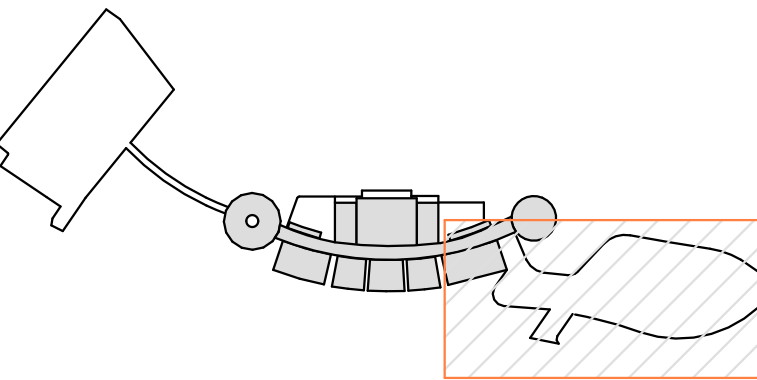
ACT Geotechnical

Facade Engineer
Level 5, 151 Clarence Street, Sydney NSW 2000

ARUP

AV Design
Level 5, 151 Clarence Street, Sydney NSW 2000

ARUP



KEY PLAN

Cox Architecture
70 George Street
The Rocks NSW 2000
Australia

Nominated Architects:
Joe Agius No. 6491
Ramin Jahromi No. 10000

T + 61 2 9267 9599
coxarchitecture.com.au

COX

Client
REGIONAL CIRCULARITY
CO-OPERATIVE

Project No.
222111.01

Project
NATIONAL CIRCULARITY CENTRE
BEGA

Level 1 / Suite 5/106 Auckland St, Bega, NSW, 2550

Acknowledgement

Drawing Title
GROUND FLOOR PLAN - ZONE C

Document Control Status:

DESIGN DEVELOPMENT

DRAFT

Co-ordinated:
LV

Drawn:
SM

Project Architect:
LV

Scale:
As indicated @ A1

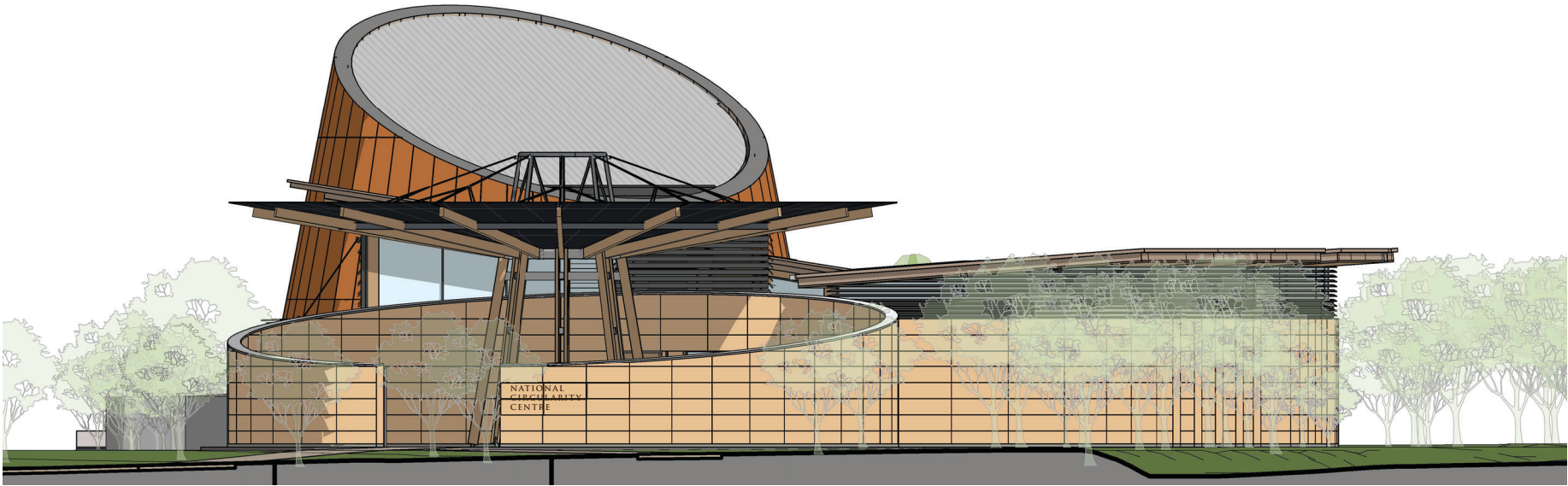
Project Director:
JF

Date:
30/09/2024

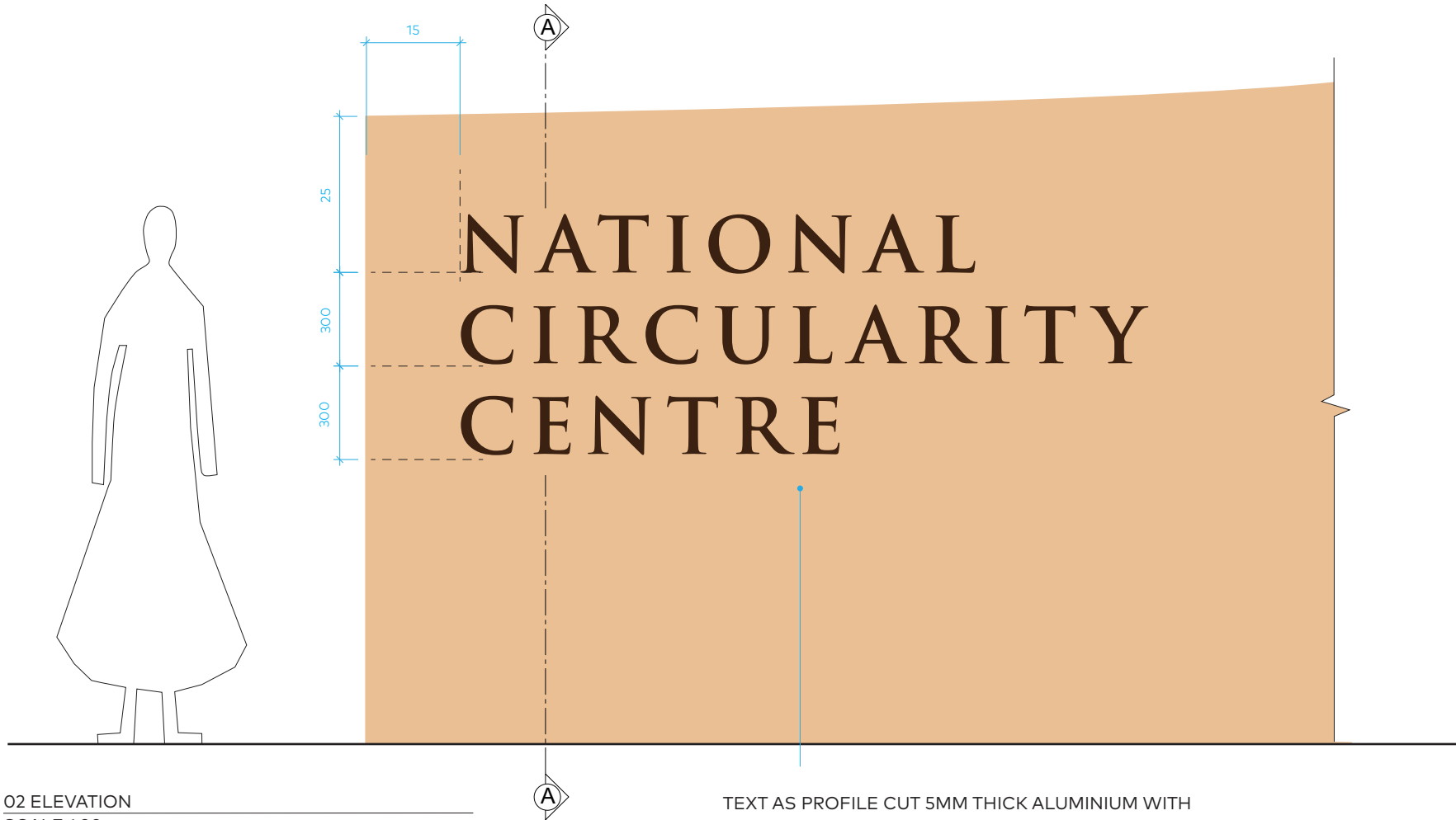
Drawing Number:
A-20-02

Revision:
4

PLOT STAMP DATE: 30/09/2024 6:32:44 PM

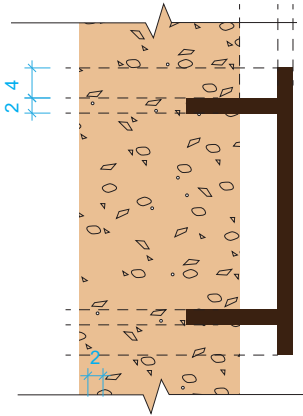


01 ELEVATION
SCALE 1:100



02 ELEVATION
SCALE 1:20

TEXT AS PROFILE CUT 5MM THICK ALUMINIUM WITH
BRONZE FINISH - TYPEFACE AS TRAJAN PRO



03 DETAIL A-A
SCALE 1:5

Unless otherwise noted all dimensions in millimetres. Use figured dimensions in preference to scaling. Contractor to confirm all dimensions and details on site prior to manufacture.

ATTENTION
This document must be read in conjunction with the following:
• General Drawings
• Sign Location Plans
• Sign Type Drawings
• Sign Message Schedule
• Sign Specification

CONSTRUCTION DETAILS:
A: Fabricated aluminium logo mark with bronze finish mechanically fixed to the substrate.
B: Extruded aluminium letter forms with bronze finish mechanically fixed to the substrate.
C: Text to be recessed within the substrate with bronze finished aluminium panel fixed to the recessed surface of the letters.

Rev	Description	By	Date
1	Issued For DA Submission	LV	09/04/2024
2	Issued For DA Submission	SM	27/09/2024

Structural Engineer
Level 5, 151 Clarence Street, Sydney NSW 2000
ARUP

MEP Engineers
Level 5, 151 Clarence Street, Sydney NSW 2000
ARUP

Acoustic Engineer
Level 5, 151 Clarence Street, Sydney NSW 2000
ARUP

Civil Engineer
Level 5, 151 Clarence Street, Sydney NSW 2000
ARUP

Sustainability and ESD Engineer
Level 5, 151 Clarence Street, Sydney NSW 2000
ARUP

Quantity Surveyor
Level 26, 45 Clarence Street, Sydney NSW 2000
T +61 2 9929 7422
WT Partnership

Traffic Engineer
Shaw 7, 720 Old Pittwater Highway, Sutherland NSW 2232
T +61 2 9521 7199
McLaren Traffic Engineering

Stormwater Engineer
Bega NSW 2550
M +61 0409 909 386
JSA Engineering Solutions

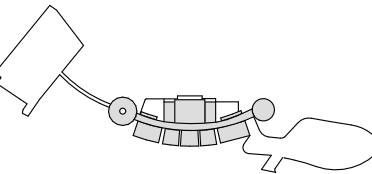
BCA/ DDA Consultant
ATLR

Landscape Architect
13148 Princes Highway Bega, NSW, 2550
T +61 2 6460 7242
Provincial Plants & Landscapes

Ecologist
7 High Crescent Tura Beach, NSW, 2550
M +61 448 235 577
Local Environmental Solutions

Geotechnical Engineer
Unit 2/107 Newcastle St, Fyshwick, ACT, 2609
T +61 2 6262 1547
ACT Geotechnical

Facade Engineer
Level 5, 151 Clarence Street, Sydney NSW 2000
ARUP



KEY PLAN

Cox Architecture
70 George Street
The Rocks NSW 2000
Australia
T + 61 2 9267 9599
coxarchitecture.com.au

Nominated Architects:
Joe Agius No. 8491
Ramin Jahromi No. 10000

COX

Client
REGIONAL CIRCULARITY
CO-OPERATIVE

Project No.
222111.01

Project
NATIONAL CIRCULARITY CENTRE
BEGA

Level 1 / Suite 5/106 Auckland St, Bega, NSW, 2550

Acknowledgement

Drawing Title
EXTERNAL SIGNAGE - SHEET 4

Document Control Status:
DEVELOPMENT APPLICATION

Co-ordinated:
LV

Project Architect:
LV

Project Director:
JF

Drawing Number:
DA-7703

Drawn:
LV

Scale:
@ A3
1:1

Date:
27/09/2024

Revision:
2

